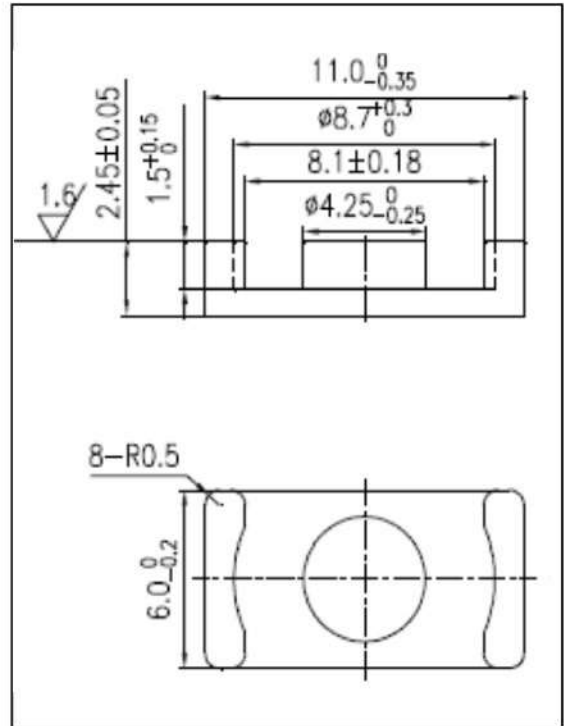


CORE SETS

Effective core parameters

SYMBOL	PARAMETER	VALUE	UNIT
$\Sigma (1/A)$	core factor (C_1)	1.24	mm^{-1}
V_e	effective volume	174.93	mm^3
l_e	effective length	14.70	mm
A_e	effective area	11.90	mm^2
A_{\min}	minimum area	10.30	mm^2
W_t	mass of core set	≈ 1.1	g



Characteristic

GRADE	$AL (\text{nH}/\text{N}^2)$	$B (\text{mT})$	CORE LOSS (W)
	$f=10\text{kHz}$ $U=0.25\text{V}$	$H=250\text{A}/\text{m}$ $f=25\text{kHz}$ $T=100^\circ\text{C}$	$f=100\text{kHz}$ $B=200\text{mT}$ $T=100^\circ\text{C}$
DMR40	$1200 \pm 25\%$	—	≤ 0.136
DMR44	$1200 \pm 25\%$	—	≤ 0.113