



CONTACTOR, AC-3 5.5KW/400 V, AC-1 22 A, DC 24V
4-POLE, 2 NO + 2 NC, SIZE S00, SCREW
CONNECTION

Figure similar

| | | |
|---------------------|--|-----------------|
| product brand name | | SIRIUS |
| Product designation | | power contactor |

General technical data:

| | | |
|---|---|------------|
| Insulation voltage | | |
| • Rated value | V | 690 |
| Degree of pollution | | 3 |
| Mechanical service life (switching cycles) | | |
| • of the contactor typical | | 30 000 000 |
| • of the contactor with added electronics-compatible auxiliary switch block typical | | 5 000 000 |
| • of the contactor with added auxiliary switch block typical | | 10 000 000 |
| Protection class IP | | |
| • on the front | | IP20 |
| Equipment marking | | |
| • acc. to DIN EN 61346-2 | | Q |
| • acc. to DIN EN 81346-2 | | Q |

Main circuit:

| | | |
|--|---|----|
| Number of poles for main current circuit | | 4 |
| Number of NC contacts for main contacts | | 2 |
| Number of NO contacts for main contacts | | 2 |
| Operating current | | |
| • at AC-1 | | |
| — up to 690 V at ambient temperature 40 °C | A | 22 |
| Rated value | | |

| | | |
|---|----|-------|
| — up to 690 V at ambient temperature 60 °C Rated value | A | 20 |
| • at AC-2 at AC-3 at 400 V | | |
| — per NO contact Rated value | A | 12 |
| — per NC contact Rated value | A | 12 |
| Operating current with 1 current path | | |
| • at DC-1 | | |
| — at 24 V Rated value | A | 20 |
| — at 110 V Rated value | A | 2.1 |
| — at 220 V Rated value | A | 0.8 |
| — at 440 V Rated value | A | 0.6 |
| • at DC-3 at DC-5 | | |
| — at 24 V per NC contact Rated value | A | 20 |
| — at 24 V per NO contact Rated value | A | 20 |
| — at 110 V per NC contact Rated value | A | 0.075 |
| — at 110 V per NO contact Rated value | A | 0.15 |
| — at 220 V per NC contact Rated value | A | 0.375 |
| — at 220 V per NO contact Rated value | A | 0.75 |
| Operating current with 2 current paths in series | | |
| • at DC-1 | | |
| — at 24 V Rated value | A | 20 |
| — at 110 V Rated value | A | 12 |
| — at 220 V Rated value | A | 1.6 |
| — at 440 V Rated value | A | 0.8 |
| • at DC-3 at DC-5 | | |
| — at 110 V per NC contact Rated value | A | 0.175 |
| — at 110 V per NO contact Rated value | A | 0.35 |
| — at 24 V per NC contact Rated value | A | 20 |
| — at 24 V per NO contact Rated value | A | 20 |
| Operating power | | |
| • at AC-1 at 400 V Rated value | kW | 13 |
| Operating power | | |
| • at AC-1 | | |
| — at 230 V Rated value | kW | 7.5 |
| • at AC-2 at AC-3 | | |
| — at 230 V per NC contact Rated value | kW | 3 |
| — at 230 V per NO contact Rated value | kW | 3 |
| — at 400 V per NC contact Rated value | kW | 5.5 |
| — at 400 V per NO contact Rated value | kW | 5.5 |
| Control circuit/ Control: | | |
| Type of voltage of the control supply voltage | | DC |

| | | |
|--|---|--------------|
| Control supply voltage for DC | | |
| • Rated value | V | 24 |
| Operating range factor control supply voltage rated value of the magnet coil for DC | | 0.85 ... 1.1 |
| Closing power of the magnet coil for DC | W | 3.3 |
| Holding power of the magnet coil for DC | W | 3.3 |
| Control version of the switch operating mechanism | | conventional |

Auxiliary circuit:

| | | |
|--|---|---|
| Number of NC contacts | | |
| • for auxiliary contacts | | |
| — instantaneous contact | | 0 |
| Number of NO contacts | | |
| • for auxiliary contacts | | |
| — instantaneous contact | | 0 |
| Operating current at AC-15 | | |
| • at 230 V Rated value | A | 6 |
| • at 400 V Rated value | A | 3 |
| Operating current | | |
| • at DC-12 at 220 V Rated value | A | 1 |
| • at DC-13 at 220 V Rated value | A | 0.3 |
| Operating current | | |
| • at DC-12 | | |
| — at 60 V Rated value | A | 6 |
| — at 110 V Rated value | A | 3 |
| • at DC-13 | | |
| — at 24 V Rated value | A | 10 |
| — at 60 V Rated value | A | 2 |
| — at 110 V Rated value | A | 1 |
| Contact reliability of the auxiliary contacts | | 1 faulty switching per 100 million (17 V, 1 mA) |

Short-circuit:

| | | |
|---|--|------------------|
| Design of the fuse link | | |
| • for short-circuit protection of the main circuit | | |
| — with type of assignment 1 required | | fuse gL/gG: 35 A |
| — with type of assignment 2 required | | fuse gL/gG: 20 A |
| • for short-circuit protection of the auxiliary switch required | | fuse gL/gG: 10 A |

Installation/ mounting/ dimensions:

| | | |
|--------------------------|--|---|
| mounting position | | with vertical mounting surface +/-180° rotatable, with vertical mounting surface +/- 30° tiltable to the front and back |
| Mounting type | | screw and snap-on mounting onto 35 mm standard mounting rail according to DIN EN 50022 |

| | | |
|-------------------------|----|------|
| • Side-by-side mounting | | Yes |
| Height | mm | 57.5 |
| Width | mm | 45 |
| Depth | mm | 72 |
| Required spacing | | |
| • for grounded parts | | |
| — at the side | mm | 6 |

Connections/ Terminals:

| | | |
|---|--|--|
| Type of electrical connection | | |
| • for main current circuit | | screw-type terminals |
| • for auxiliary and control current circuit | | screw-type terminals |
| Type of connectable conductor cross-section | | |
| • for main contacts | | |
| — solid | | 2x (0.5 ... 1.5 mm ²), 2x (0.75 ... 2.5 mm ²), max. 2x (0.75 ... 4 mm ²) |
| — single or multi-stranded | | 2x (0.5 ... 1.5 mm ²), 2x (0.75 ... 2.5 mm ²), max. 2x (0.75 ... 4 mm ²) |
| — finely stranded with core end processing | | 2x (0.5 ... 1.5 mm ²), 2x (0.75 ... 2.5 mm ²) |
| • for AWG conductors for main contacts | | 2x (20 ... 16), 2x (18 ... 14), 1x 12 |
| • for auxiliary contacts | | |
| — solid | | 2x (0.5 ... 1.5 mm ²), 2x (0.75 ... 2.5 mm ²), max. 2x (0.75 ... 4 mm ²) |
| — single or multi-stranded | | 2x (0.5 ... 1.5 mm ²), 2x (0.75 ... 2.5 mm ²), max. 2x (0.75 ... 4 mm ²) |
| — finely stranded with core end processing | | 2x (0.5 ... 1.5 mm ²), 2x (0.75 ... 2.5 mm ²) |
| • for AWG conductors for auxiliary contacts | | 2x (20 ... 16), 2x (18 ... 14), 1x 12 |

Safety related data:

| | | |
|--|-----|-------------|
| Failure rate [FIT] with low demand rate acc. to SN 31920 | FIT | 100 |
| Protection against electrical shock | | finger-safe |

Mechanical data:

| | | |
|-------------------|--|-----|
| Size of contactor | | S00 |
|-------------------|--|-----|

Ambient conditions:

| | | |
|---|----|-------------|
| Installation altitude at height above sea level maximum | m | 2 000 |
| Ambient temperature | | |
| • during operation | °C | -25 ... +60 |
| • during storage | °C | -55 ... +80 |

Certificates/ approvals:

| | |
|--------------------------|---------------------------------------|
| General Product Approval | Functional Safety/Safety of Machinery |
|--------------------------|---------------------------------------|



[Type Examination](#)

| | | |
|---------------------------|-------------------|-------------------|
| Declaration of Conformity | Test Certificates | Shipping Approval |
|---------------------------|-------------------|-------------------|



[Special Test Certificate](#)



| | |
|-------------------|-------|
| Shipping Approval | other |
|-------------------|-------|



[Environmental Confirmations](#)

[Confirmation](#)

[other](#)

Further information

Information- and Downloadcenter (Catalogs, Brochures,...)

<http://www.siemens.com/industrial-controls/catalogs>

Industry Mall (Online ordering system)

<http://www.siemens.com/industrymall>

Cax online generator

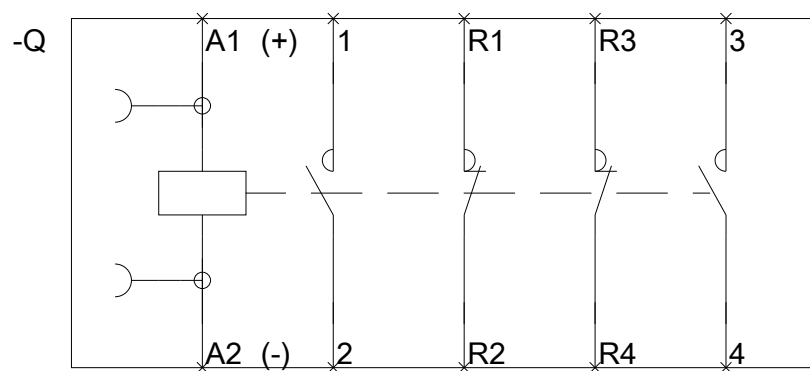
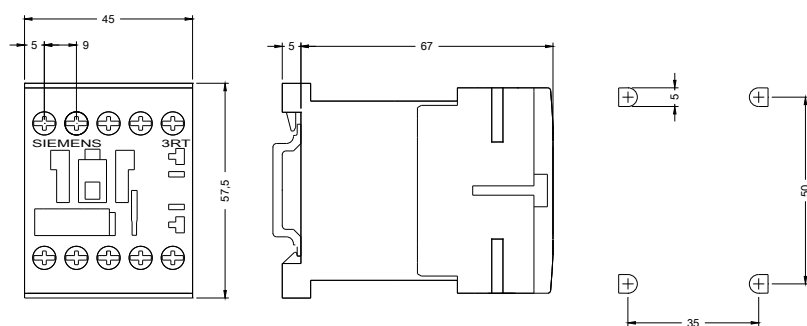
<http://support.automation.siemens.com/WW/CAXorder/default.aspx?lang=en&mlfb=3RT15171BB40>

Service&Support (Manuals, Certificates, Characteristics, FAQs,...)

<http://support.automation.siemens.com/WW/view/en/3RT15171BB40/all>

Image database (product images, 2D dimension drawings, 3D models, device circuit diagrams, EPLAN macros, ...)

http://www.automation.siemens.com/bilddb/cax_de.aspx?mlfb=3RT15171BB40&lang=en



last modified:

11.03.2015