

**IC Socket Series**

**KLS1-217 DUAL-IN-LINE IC Socket 2.54mm With Round Pin**

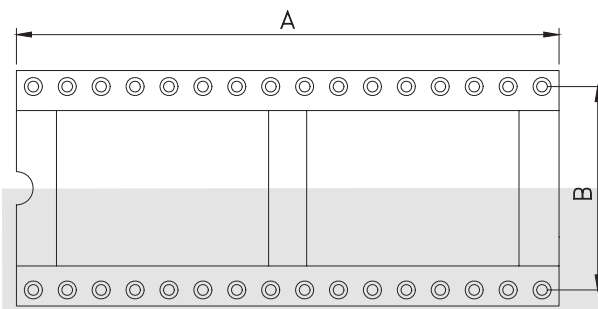


**Electrical Characteristics:**

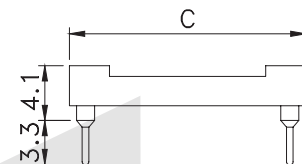
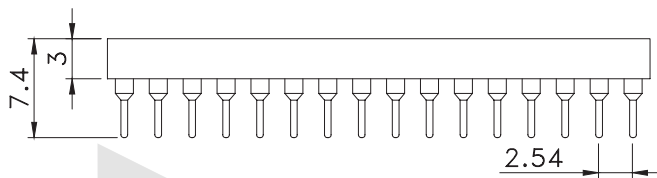
Current Rating: 1 AMP  
 Insulator Resistance: 5000MΩmin. at DC 500V  
 Contact Resistance: 20mΩmax. at DC 100mA  
 Operating Temperature: -45°C~+105°C

**Material:**

Housing: PBT UL94V ~ 0  
 Contacts: PinBrass, TinPlated  
 Contacts: Clip-Beryllium copper, Gold Plated



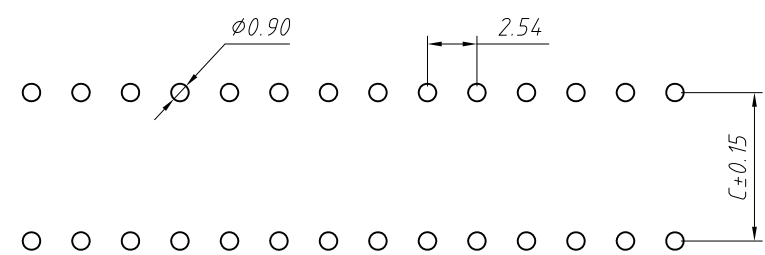
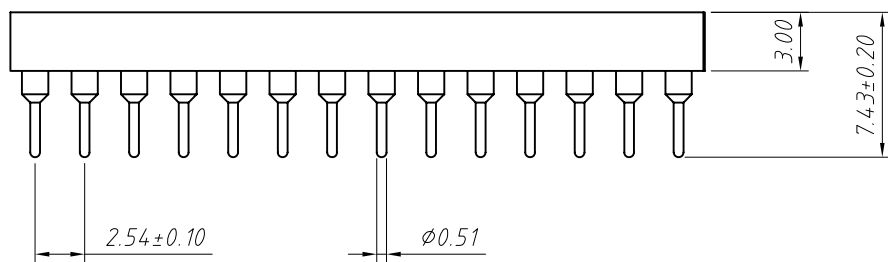
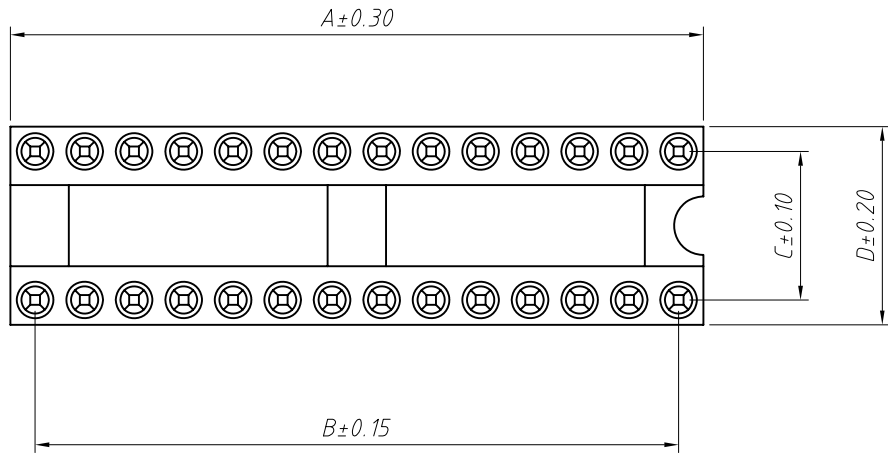
CIRCUITS	DIM.A	DIM.B	DIM.C
06	7.62	7.62	10.16
08	10.16	7.62	10.16
14	17.78	7.62	10.16
16	20.32	7.62	10.16
18	22.86	7.62	10.16
20	25.40	7.62	10.16
22	27.94	7.62	10.16
24	30.48	7.62	10.16
28	35.56	7.62	10.16
24	30.48	15.24	17.78
28	35.56	15.24	17.78
32	40.64	15.24	17.78
40	50.80	15.24	17.78
42	53.34	15.24	17.78
48	60.96	15.24	17.78



**ORDER INFORMATION**

**Product No.: KLS1-217-XX-Y-1**

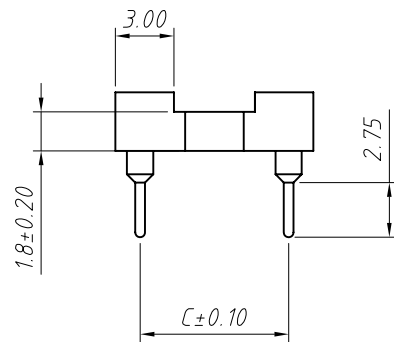
Pos. NO. \_\_\_\_\_  
 DUAL-IN-LINE IC Socket 2.54mm with Round Pin Series  
 Number of Contacts: XX=06-48Pin  
 Row spacing Code: 1: B=7.62mm 2: B=15.24mm  
 Y-Imported material Z-Domestic material



PCB LAYOUT

Material:  
Housing: PBT UL 94 V<sup>0</sup>  
Contacts: Beryllium copper or Phosphor Bronze  
Plating: Au 2u" or Sn over 50u" nickel

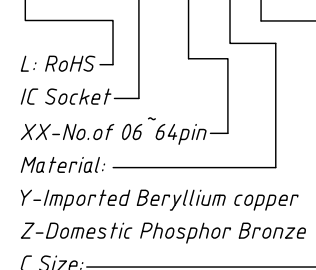
Electrical Characteristics:  
Current Rating: 3.0 AMP  
Insulator Resistance: 1000M $\Omega$  min.  
Contact Resistance: 20m $\Omega$  max.  
Operating Temperature: -40°C ~ +105°C



Pins	DIM A	DIM B	DIM C	DIM D
06	7.62	5.08	7.62	10.16
08	10.16	7.62	7.62	10.16
10	12.70	10.16	7.62	10.16
14	17.78	15.24	7.62	10.16
16	20.32	17.78	7.62	10.16
18	22.86	20.32	7.62	10.16
20	25.40	22.86	7.62	10.16
24	30.48	27.94	7.62	10.16
28	35.56	33.02	7.62	10.16
20	25.40	22.86	10.16	12.70
22	27.94	25.40	10.16	12.70
24	30.48	27.94	10.16	12.70
28	35.56	33.02	10.16	12.70
24	30.48	27.94	15.24	17.78
28	35.56	33.02	15.24	17.78
32	40.64	38.10	10.16	12.70
32	40.64	38.10	15.24	17.78
36	45.72	43.18	15.24	17.78
40	50.80	48.26	15.24	17.78
42	53.34	50.80	15.24	17.78
48	60.96	58.42	15.24	17.78
50	63.50	60.96	15.24	17.78
52	66.04	63.50	15.24	17.78
50	63.50	60.96	22.86	25.40
52	66.04	63.50	22.86	25.40
64	81.28	78.74	22.86	25.40

Order Information:

L-KLS1-217-XX-Y-1

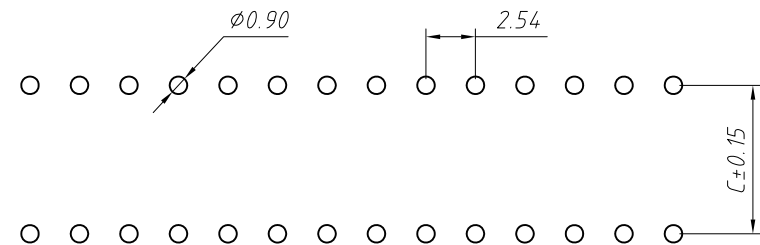
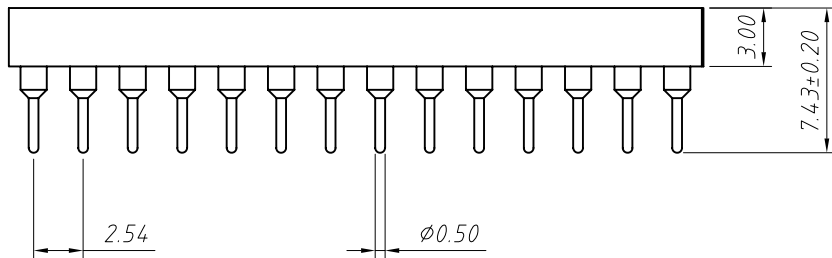
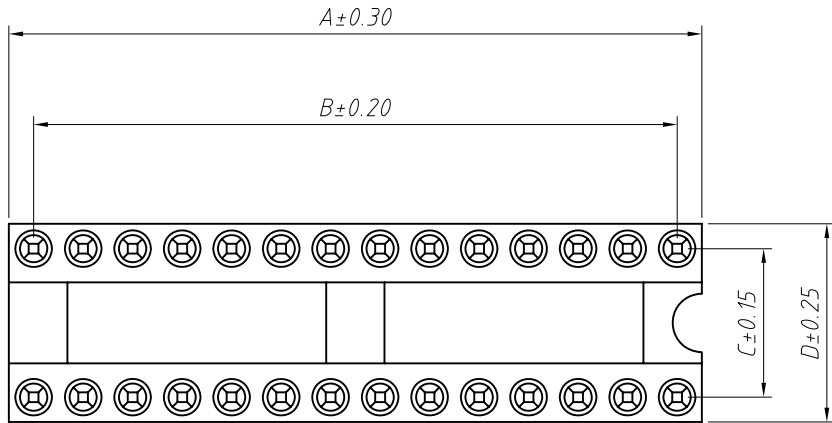


L: RoHS  
IC Socket  
XX-No. of 06 ~ 64pin  
Material:

Y-Imported Beryllium copper  
Z-Domestic Phosphor Bronze  
C Size:

1=7.62mm 2=15.24mm  
3=10.16mm 4=22.86mm

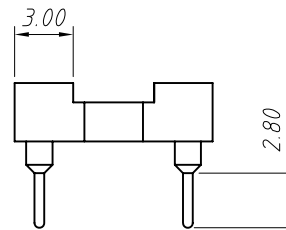
GENERAL TOLERANCE	PROJECTION		Description:
X. ±0.50	UNITS	mm	2.54mm Pitch IC Socket Connector
.X ±0.25	SCALE	1:1	
.XX ±0.10	Draw by:	Jenny	
ANGLE TOLERANCE	Check by:		KLS P/N: L-KLS1-217-XX-Y-1
X. ±5°	Date	2018-03-01	NingBo KLS ELECTRONIC CO.,L TD.
.X ±3°	SHEET	1 OF 1	
.XX ±2°			



PCB LAYOUT

Material:  
Housing: PBT/PPS, UL94V-0  
Contacts: Beryllium copper or Phosphor Bronze  
Plating: Au 2u" or Sn over 50u" nickel

Electrical Characteristics:  
Current Rating: 3.0 AMP  
Insulator Resistance: 1000M $\Omega$  min.  
Contact Resistance: 20m $\Omega$  max.  
Operating Temperature: -40°C ~ +105°C



Pins	DIM A	DIM B	DIM C	DIM D
06	7.62	5.08	7.62	10.16
08	10.16	7.62	7.62	10.16
10	12.70	10.16	7.62	10.16
14	17.78	15.24	7.62	10.16
16	20.32	17.78	7.62	10.16
18	22.86	20.32	7.62	10.16
20	25.40	22.86	7.62	10.16
24	30.48	27.94	7.62	10.16
28	35.56	33.02	7.62	10.16
20	25.40	22.86	10.16	12.70
22	27.94	25.40	10.16	12.70
24	30.48	27.94	10.16	12.70
28	35.56	33.02	10.16	12.70
24	30.48	27.94	15.24	17.78
28	35.56	33.02	15.24	17.78
32	40.64	38.10	10.16	12.70
32	40.64	38.10	15.24	17.78
36	45.72	43.18	15.24	17.78
40	50.80	48.26	15.24	17.78
42	53.34	50.80	15.24	17.78
48	60.96	58.42	15.24	17.78
50	63.50	60.96	15.24	17.78
52	66.04	63.50	15.24	17.78
50	63.50	60.96	22.86	25.40
52	66.04	63.50	22.86	25.40
64	81.28	78.74	22.86	25.40

Order Information:

L-KLS1-217-XX-Y-1-G3-PC

L: RoHS

XX=No. of 06~64 pins

Material:

Y-Imported Beryllium copper

Z-Domestic Phosphor Bronze

Row spacing Code:

1=7.62mm 2=15.24mm

3=10.16mm 4=22.86mm

Plating: Au 3u"

CP=Without Bar

GENERAL TOLERANCE	PROJECTION		Description:
X. $\pm 0.50$	UNITS	mm	2.54mm Pitch IC Socket Connector
.X $\pm 0.25$	SCALE	1:1	
.XX $\pm 0.10$	Draw by:	Jenny	
ANGLE TOLERANCE	Check by:		KLS P/N: L-KLS1-217-XX-Y-1-G3-PC
X. $\pm 5^\circ$	Date	2018-03-01	NingBo KLS ELECTRONIC CO.,L TD.
.X $\pm 3^\circ$	SHEET	1 OF 1	
.XX $\pm 2^\circ$			