



# Quick Selection



**Push Button, Non-illuminated, Momentary, Flush**

- | Plastic    | Metal    |
|------------|----------|
| ○ 800FP-F1 | 800FM-F1 |
| ● 800FP-F2 | 800FM-F2 |
| ● 800FP-F3 | 800FM-F3 |
| ● 800FP-F4 | 800FM-F4 |
| ● 800FP-F5 | 800FM-F5 |
| ● 800FP-F6 | 800FM-F6 |
| ∅ 800FP-F9 | 800FM-F9 |
- ∅ Push Button without Cap



**Push Button, Illuminated, Momentary, Extended**

- | Plastic     | Metal     |
|-------------|-----------|
| ● 800FP-LE3 | 800FM-LE3 |
| ● 800FP-LE4 | 800FM-LE4 |
| ● 800FP-LE5 | 800FM-LE5 |
| ● 800FP-LE6 | 800FM-LE6 |
| ○ 800FP-LE7 | 800FM-LE7 |
| ∅ 800FP-LE9 | 800FM-LE9 |
- ∅ Push Button without Cap



**Push Button, Non-illuminated, Momentary, Extended**

- | Plastic    | Metal    |
|------------|----------|
| ○ 800FP-E1 | 800FM-E1 |
| ● 800FP-E2 | 800FM-E2 |
| ● 800FP-E3 | 800FM-E3 |
| ● 800FP-E4 | 800FM-E4 |
| ● 800FP-E5 | 800FM-E5 |
| ● 800FP-E6 | 800FM-E6 |
| ∅ 800FP-E9 | 800FM-E9 |
- ∅ Push Button without Cap



**Reset Push Button**

- | Plastic      | Metal      |
|--------------|------------|
| Ⓡ 800FP-R611 | 800FM-R611 |
| ● 800FP-R6   | 800FM-R6   |



**Pilot Light**

- | Plastic    | Metal    |
|------------|----------|
| ● 800FP-P3 | 800FM-P3 |
| ● 800FP-P4 | 800FM-P4 |
| ● 800FP-P5 | 800FM-P5 |
| ● 800FP-P6 | 800FM-P6 |
| ○ 800FP-P7 | 800FM-P7 |
| ∅ 800FP-P9 | 800FM-P9 |
- ∅ Pilot light without lens or diffuser



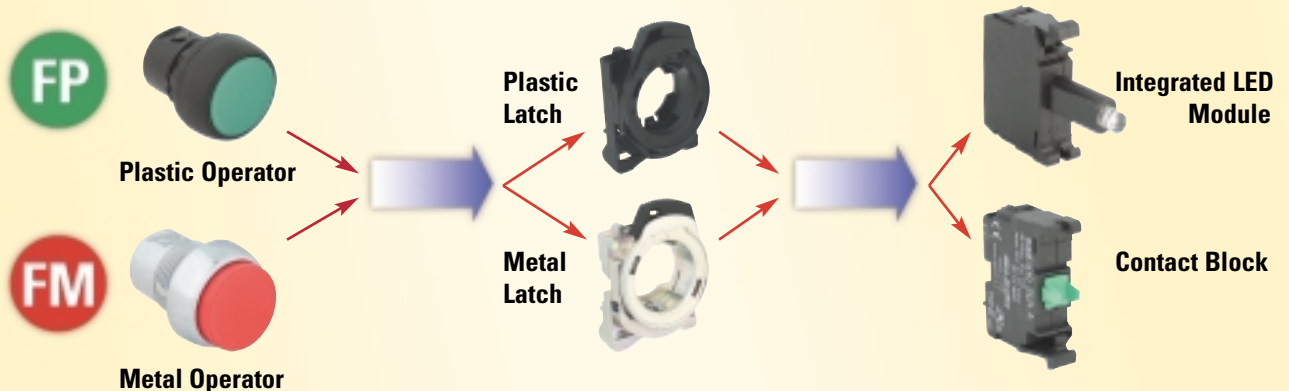
**Push Button, Illuminated, Momentary, Flush**

- | Plastic     | Metal     |
|-------------|-----------|
| ● 800FP-LF3 | 800FM-LF3 |
| ● 800FP-LF4 | 800FM-LF4 |
| ● 800FP-LF5 | 800FM-LF5 |
| ● 800FP-LF6 | 800FM-LF6 |
| ○ 800FP-LF7 | 800FM-LF7 |
| ∅ 800FP-LF9 | 800FM-LF9 |
- ∅ Push Button without Cap



**Multi-function, Non-illuminated**

- | Plastic         | Metal         |
|-----------------|---------------|
| ● 800FP-U2FFFE  | 800FM-U2FFFE  |
| ● 800FP-U2EFFE  | 800FM-U2EFFE  |
| ● 800FP-U3F3F34 | 800FM-U3F3F34 |





**Selector Switch, Non-illuminated,  
2 Position, Maintained**

- | Plastic      | Metal      |
|--------------|------------|
| ● 800FP-SM22 | 800FM-SM22 |



**Selector Switch, Illuminated,  
2 Position, Spring Return from Left**

- | Plastic       | Metal       |
|---------------|-------------|
| ● 800FP-LSL23 | 800FM-LSL23 |
| ● 800FP-LSL24 | 800FM-LSL24 |
| ● 800FP-LSL25 | 800FM-LSL25 |
| ● 800FP-LSL26 | 800FM-LSL26 |
| ○ 800FP-LSL27 | 800FM-LSL27 |



**Selector Switch, Non-illuminated,  
2 Position, Spring Return from Right**

- | Plastic      | Metal      |
|--------------|------------|
| ● 800FP-SR22 | 800FM-SR22 |



**Selector Switch, Non-illuminated,  
3 Position, Maintained**

- | Plastic      | Metal      |
|--------------|------------|
| ● 800FP-SM32 | 800FM-SM32 |



**Selector Switch, Non-illuminated,  
2 Position, Spring Return from Left**

- | Plastic      | Metal      |
|--------------|------------|
| ● 800FP-SL22 | 800FM-SL22 |



**Selector Switch, Non-illuminated,  
3 Position, Spring Return from Right**

- | Plastic      | Metal      |
|--------------|------------|
| ● 800FP-SR32 | 800FM-SR32 |



**Selector Switch, Illuminated,  
2 Position, Maintained**

- | Plastic       | Metal       |
|---------------|-------------|
| ● 800FP-LSM23 | 800FM-LSM23 |
| ● 800FP-LSM24 | 800FM-LSM24 |
| ● 800FP-LSM25 | 800FM-LSM25 |
| ● 800FP-LSM26 | 800FM-LSM26 |
| ○ 800FP-LSM27 | 800FM-LSM27 |



**Selector Switch, Non-illuminated,  
3 Position, Spring Return from Left**

- | Plastic      | Metal      |
|--------------|------------|
| ● 800FP-SL32 | 800FM-SL32 |



**Selector Switch, Illuminated,  
2 Position, Spring Return from Right**

- | Plastic       | Metal       |
|---------------|-------------|
| ● 800FP-LSR23 | 800FM-LSR23 |
| ● 800FP-LSR24 | 800FM-LSR24 |
| ● 800FP-LSR25 | 800FM-LSR25 |
| ● 800FP-LSR26 | 800FM-LSR26 |
| ○ 800FP-LSR27 | 800FM-LSR27 |



**Selector Switch, Non-illuminated,  
3 Position, Spring Return from Both**

- | Plastic      | Metal      |
|--------------|------------|
| ● 800FP-SB32 | 800FM-SB32 |





### Selector Switch, Illuminated, 3 Position, Maintained

Plastic	Metal
● 800FP-LSM33	800FM-LSM33
● 800FP-LSM34	800FM-LSM34
● 800FP-LSM35	800FM-LSM35
● 800FP-LSM36	800FM-LSM36
○ 800FP-LSM37	800FM-LSM37



### Selector Switch, Illuminated, 3 Position, Spring Return from Both

Plastic	Metal
● 800FP-LSB33	800FM-LSB33
● 800FP-LSB34	800FM-LSB34
● 800FP-LSB35	800FM-LSB35
● 800FP-LSB36	800FM-LSB36
○ 800FP-LSB37	800FM-LSB37



### Selector Switch, Illuminated, 3 Position, Spring Return from Right

Plastic	Metal
● 800FP-LSR33	800FM-LSR33
● 800FP-LSR34	800FM-LSR34
● 800FP-LSR35	800FM-LSR35
● 800FP-LSR36	800FM-LSR36
○ 800FP-LSR37	800FM-LSR37



### Key Selector Switch, Ronis, 2 Position

Plastic	Metal
● 800FP-KM21	800FM-KM21
● 800FP-KM23	800FM-KM23
● 800FP-KR21	800FM-KR21



### Selector Switch, Illuminated, 3 Position, Spring Return from Left

Plastic	Metal
● 800FP-LSL33	800FM-LSL33
● 800FP-LSL34	800FM-LSL34
● 800FP-LSL35	800FM-LSL35
● 800FP-LSL36	800FM-LSL36
○ 800FP-LSL37	800FM-LSL37



### Key Selector Switch, Ronis, 3 Position

Plastic	Metal
● 800FP-KM31	800FM-KM31
● 800FP-KM33	800FM-KM33
● 800FP-KM34	800FM-KM34
● 800FP-KB34	800FM-KB34
● 800FP-KR35	800FM-KR35

### Contact Block, Screw Terminations, (latch not included)

800F-X10		1NO
800F-X01		1NC
800F-X10E		1NO Early Make
800F-X01L		1NC Late Break
800F-X10V (1mA)		1NO QuadCONNECT™
800F-X01V (1mA)		1NC QuadCONNECT™
800F-X01S		1 Self-monitoring



### Contact Block, Spring-Clamp Terminations, (latch not included)

800F-Q10		1NO
800F-Q01		1NC



### Mushroom Push Button, Non-illuminated, 40 mm Momentary

Plastic	Metal
● 800FP-MM42	800FM-MM42
● 800FP-MM43	800FM-MM43
● 800FP-MM44	800FM-MM44
● 800FP-MM45	800FM-MM45
● 800FP-MM46	800FM-MM46



### E-STOP Push Button Key Release, 40 mm Mushroom

	Plastic	Metal
	800FP-MK44	800FM-MK44
<b>Complete unit</b>		
1 SMCB	800FP-MK44PX01S	800FM-MK44MX01S
1 SMCB+ 1NO	800FP-MK44PX11S	800FM-MK44MX11S



### E-STOP Push Button, Twist-to-release, 30 mm Mushroom

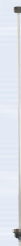
Plastic	Metal
800FP-MT34	800FM-MT34
<b>Complete unit</b>	
800FP-MT34PX01S	800FM-MT34MX01S
800FP-MT34PX11S	800FM-MT34MX11S

1 SMCB  
1 SMCB+ 1NO

### Accessories

#### Reset Rod

800F-ATR01	40 mm
800F-ATR02	55 mm
800F-ATR04	85 mm
800F-ATR06	115 mm
800F-ATR08	145 mm
800F-ATR19	315 mm



### E-STOP Push Button, Twist-to-release, 40 mm Mushroom

Plastic	Metal
800FP-MT44	800FM-MT44
<b>Complete unit</b>	
800FP-MT44PX01S	800FM-MT44MX01S
800FP-MT44PX11S	800FM-MT44MX11S

1 SMCB  
1 SMCB+ 1NO

### Mounting Ring Wrench

800F-AW2



### E-STOP Legend

800F-15Y  
800F-16Y



### E-STOP Push Button, Twist-to-release, 60 mm Mushroom

Plastic	Metal
800FP-MT64	800FM-MT64
<b>Complete unit</b>	
800FP-MT64PX01S	800FM-MT64MX01S
800FP-MT64PX11S	800FM-MT64MX11S

1 SMCB  
1 SMCB+ 1NO

### Hole Adapter

800F-AHA1



### Anti-Rotation Washer

800F-ALC1



### Plastic Enclosures



Holes	Gray	Yellow
1	800F-1P M <sup>1</sup>	800E-1Y M <sup>1</sup>
2	800F-2P M	
3	800F-3P M	
4	800F-4P M	
6	800F-6P M	

### Aluminum Enclosures



Holes	Gray
1	800F-1M M <sup>1</sup>
2	800F-2M M
3	800F-3M M
5	800F-5M M

<sup>1</sup> Replace "M" with "P" for PG conduit/through holes instead of metric.

### Contact Block Base Mounted



800F-BX10	1NO
800F-BX01	1NC
800F-BX10E	1NO Early Make
800F-BX01L	1NC Late Break
800F-BX10V (1mA)	1NO QuadCONNECT™
800F-BX01V (1mA)	1NC QuadCONNECT™

### Integrated LED Base Mounted



800F-BN3*	24V AC/DC
800F-BN5*	120V AC
800F-BN7*	240V AC

\* Add LED color; R = red, G = green, Y = yellow, B = blue, W = white

## Markings for Push Buttons

It is recommended that Push Buttons be marked, near to or preferably directly on the actuators, with the following symbols:

START or ON	STOP or OFF	Push Buttons acting alternately as START or STOP buttons and as ON or OFF buttons	Push Buttons acting as START or ON buttons when pressed and as STOP or OFF buttons when released (i.e. hold-to-run)
417-IEC-5007	417-IEC-5008	417-IEC-5010	417-IEC-5011

