

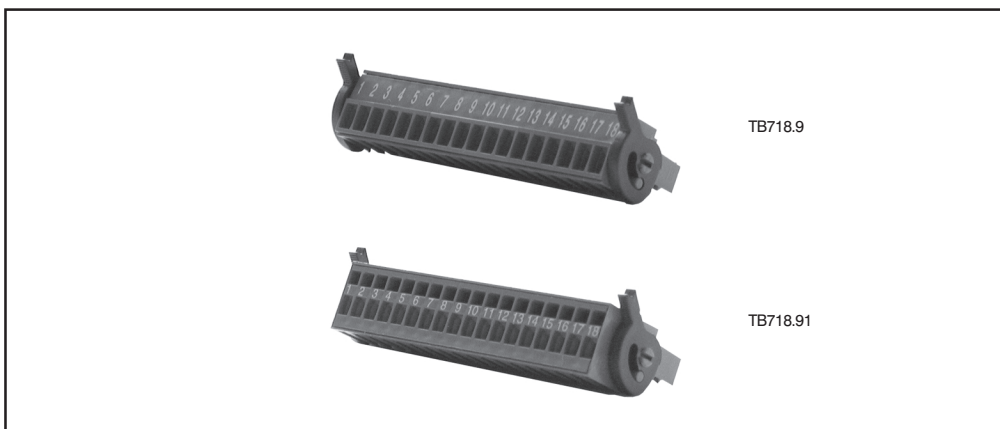
## 16.6 TB718

### 16.6.1 Order Data

Model Number	Short Description
7TB718.9	2003 terminal block, 18 pin, screw clamps
7TB718.91	2003 terminal block, 18 pin, cage clamps
7TB718-90-02	2003 terminal block, 18 pin, 20 pcs., screw clamps
7TB718-91-02	2003 terminal block, 18 pin, 20 pcs., cage clamps

This single row 18 pin terminal block is used to connect B&R 2003 I/O modules. Removal is simplified by two ejection levers on the terminal block.

### 16.6.2 Technical Data



Module ID	TB718
Number of Pins	18
Type of Terminal	Implemented as screw or cage clamps
Distance between Contacts	3.5 mm
Nominal Voltage	125 V
Current Load <sup>1)</sup>	Max. 12 A / contact
Wire Cross Section	0.08 mm <sup>2</sup> (AWG28) - 1.5 mm <sup>2</sup> (AWG16)
Cable Type	Only copper wires (no aluminum wires!)
Removal	Mechanical

<sup>1)</sup> Take the respective limit data for the I/O modules into consideration!