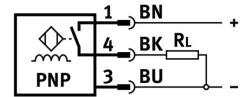
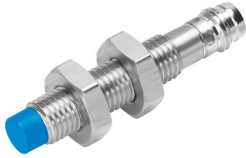


Proximity sensor SIEN-M8NB-PS-S-L

Part number: 150395

FESTO



[PDF](#) General operating condition

Data sheet

Feature	Value
Conforms to standard	EN 60947-5-2
Symbol	00991701
Certification	RCM compliance mark c UL us - Listed (OL)
CE marking (see declaration of conformity)	As per EU EMC directive
Rated operating distance	2.5 mm
Assured operating distance	2.03 mm
Reduction factors	Aluminum = 0.25 Stainless steel St 18/8 = 0.7 Copper = 0.2 Brass = 0.35 Steel St 37 = 1.0
Ambient temperature	-25 °C ... 70 °C
Repetition accuracy under constant conditions	0.12 mm
Switching output	PNP
Switching element function	N/O contact
Hysteresis	≤0.12 mm
Max. switching frequency	3000 Hz
Max. output current	200 mA
Voltage drop	≤2 V
Inductive protective circuit	Installed
Short-circuit protection	Pulsed
DC operating voltage range	10 V ... 30 V
Residual ripple	± 10%
Idle current	≤10 mA
Reverse polarity protection	for all electrical connections
Electrical connection	3-pin M8x1 Plug
Size	M8x1
Type of mounting	With lock nut
Mounting type	Not flush
Product weight	18 g
Housing material	Brass PA PBTP High-alloy stainless steel Chrome-plated
Switching status indication	LED yellow

Feature	Value
Ambient temperature with flexible cable installation	-5 °C ... 70 °C
Degree of protection	IP65 IP67
Corrosion resistance class (CRC)	2 - Moderate corrosion stress
LABS (PWIS) conformity	VDMA24364-B2-L
Selection of additional sensor information	With standard switching distance
Electrical output	PNP
Selection of sensor version	Standard