



CIRCUIT-BREAKER N-RELEASE 325 A,
SIZE S2 STARTER PROTECTION,
50 KA SCREW CONNECTION STANDARD BREAKING
CAPACITY

General technical data:

product brand name		SIRIUS
product designation		circuit breaker
Size of the circuit-breaker		S2
Degree of pollution		3
Installation altitude / at a height over sea level / maximum	m	2,000
Protection class IP / on the front		IP20
Ambient temperature		
• during storage	°C	-50 ... +80
• during operating	°C	-20 ... +70
• during transport	°C	80 ... -50
Resistance against shock		25g / 11 ms
Insulation voltage / rated value	V	690
Impulse voltage resistance / rated value	V	6,000
Active power loss / total / typical	W	12
Item designation		
• according to DIN 40719 extendable after IEC 204-2 / according to IEC 750		Q
• according to DIN EN 61346-2		Q
Mechanical operating cycles as operating time / of the main contacts / typical		50,000

Type of the driving mechanism / motor drive		No
Design of the operating mechanism		selector switch
Product function		
• overload protection		No
• phase disturbance recognition		No
Product component		
• auxiliary switch		No
• undervoltage release mechanism		No
• trip indicator		No
Product extension / optional / motor drive		Yes

Main circuit:

Number of poles / for main current circuit		3
type of voltage		AC/DC
Operating voltage / at AC-3 / rated value / maximum	V	690
Operating current / at AC-3 / at 400 V / rated value	A	25
Service power / at AC-3		
• at 400 V / rated value	kW	11
Frequency of operation / at AC-3 / according to IEC 60947-6-2 / maximum	1/h	15
Arrangement of electrical connectors / for main current circuit		front side
Adjustable response current		
• of the non-delayed short-circuit release	A	325 ... 325
Continuous current / rated value	A	25
Product extension / auxiliary switch		Yes

Auxiliary circuit:

Number of NC contacts / for auxiliary contacts / instantaneous switching		0
Number of NO contacts / for auxiliary contacts / instantaneous switching		0
Number of change-over switches / for auxiliary contacts		0







Inputs/ Outputs:

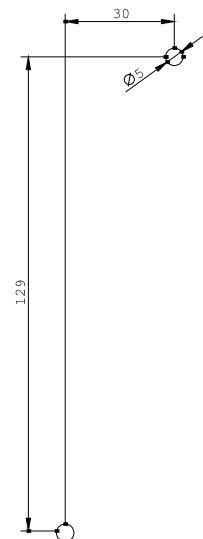
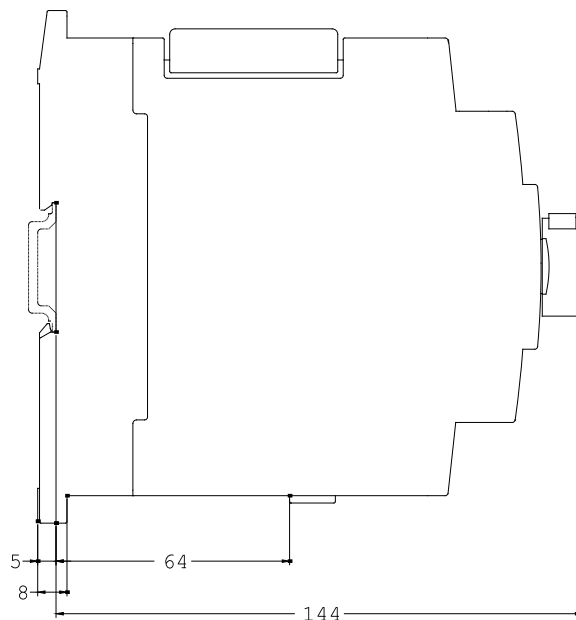
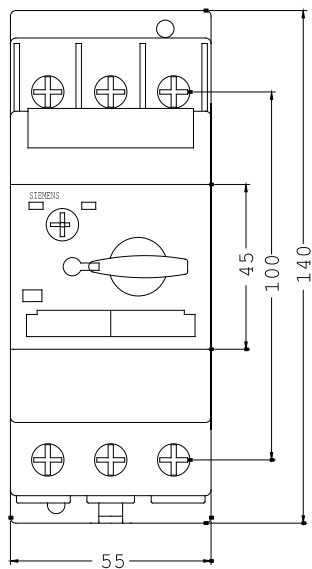
Number of digital inputs		0
--------------------------	--	---

Short-circuit:

Breaking capacity limit short-circuit current (Icu)		
• at 400 V / rated value	kA	50
• at 500 V / rated value	kA	12
• at 690 V / rated value	kA	5
Design of the electrical connection / for auxiliary and control current circuit		screw-type terminals

Design of the overcurrent release and short-circuit release		magnetic
Installation/mounting/dimensions:		
Built in orientation		any
Type of mounting		screw and snap-on mounting onto 35 mm standard mounting rail according to DIN EN 50022
Width	mm	55
Height	mm	140
Depth	mm	149
Distance, to be maintained, to the ranks assembly		
• backwards	mm	0
• sideways	mm	0
Product function / removable terminal for auxiliary and control circuit		No
Connections:		
Design of the electrical connection		
• for main current circuit		screw-type terminals with box terminals
Type of the connectable conductor cross-section		
• for main contacts		
• solid		2x (0.75 ... 16 mm ²)
• stranded		2x (0.75 ... 25 mm ²), 0.75 ... 35 mm ²
• finely stranded		
• with conductor end processing		2x (0.75 ... 16 mm ²), 0.75 ... 25 mm ²
• for AWG conductors / for main contacts		2x (18 ... 2), 1x (18 ... 2)
Conductor cross section that can be connected / for main contacts		
• solid	mm ²	0.75 ... 16
• stranded	mm ²	0.75 ... 35
• stranded wire		
• with conductor end processing	mm ²	0.75 ... 25
AWG number / as coded connectable conductor cross-section		
• for main contacts		18 ... 2
Certificates/approvals:		

General Product Approval				Test Certificates
 CQC	 CSA	KETI	ROSTEST	Manufacturer
Shipping Approval				other
 ABS	 BUREAU VERITAS	 DNV	 GL	Manufacturer other
Safety:				
Protection against electrical shock			finger-safe	
Further information:				
Information- and Downloadcenter (Catalogs, Brochures,...) http://www.siemens.com/industrial-controls/catalogs				
Industry Mall (Online ordering system) http://www.siemens.com/industrial-controls/mall				
CAX-Online-Generator http://www.siemens.com/cax				
Service&Support (Manuals, Certificates, Characteristics, FAQs,...) http://support.automation.siemens.com/WW/view/en/3RV1331-4DC10/all				
Image database (product images, 2D dimension drawings, 3D models, device circuit diagrams, ...) http://www.automation.siemens.com/bilddb/cax_en.aspx?mlfb=3RV1331-4DC10				



last change:

Feb 6, 2012