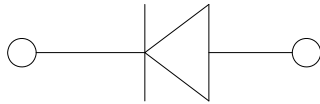
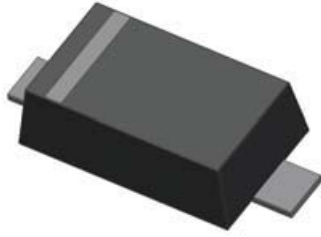


## RB520S-30

### Schottky Barrier Diode



#### Features

- $V_R$  30V
- $I_F$  200mA

#### Typical Applications

- Low Forward Voltage Drop

#### Mechanical Data

- **Package:** SOD523
- **Terminals:** Tin plated leads, solderable per J-STD-002 and JESD22-B102
- **Polarity:** Cathode line denotes the cathode end
- **Marking:** B

#### ■ Limiting Values (Absolute Maximum Rating)

Item	Symbol	Unit	Conditions	Limit Max
Power Dissipation	$P_D$	mW		150
Storage Temperature	$T_{STG}$	°C		-40 to +125
Junction Temperature	$T_J$	°C		125
DC Reverse Voltage	$V_R$	V		30
Average Rectified Forward Current	$I_{FAV}$	mA		200
Peak Forward Surge Current	$I_{FSM}$	A	8.3ms single half sine-wave	1.0

#### ■ Electrical Characteristics ( $T_a=25^\circ\text{C}$ Unless otherwise specified)

Item	Symbol	Unit	Conditions	Min	Max
Breakdown Voltage	$V_R$	V	$I_R=500\mu\text{A}$	30	
Forward Voltage	$V_F$	V	$I_F=200\text{mA}$		0.6
Reverse Leakage Current	$I_R$	$\mu\text{A}$	$V_R=10\text{V}$		1



# RB520S-30

## Ordering Information (Example)

PREFERRED P/N	PACKING CODE	UNIT WEIGHT(g)	MINIMUM PACKAGE(pcs)	INNER BOX QUANTITY(pcs)	OUTER CARTON QUANTITY(pcs)	DELIVERY MODE
RB520S-30	F2	Approximate 0.0025	8000	80000	320000	7" reel

## Characteristics(Typical)

FIG. 1 - FORWARD CHARACTERISTICS

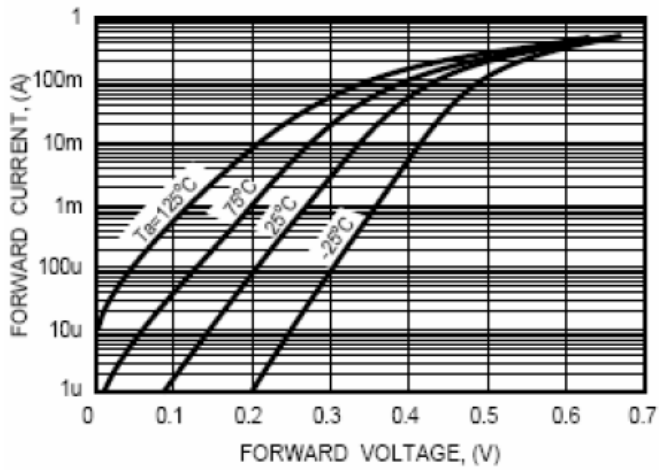
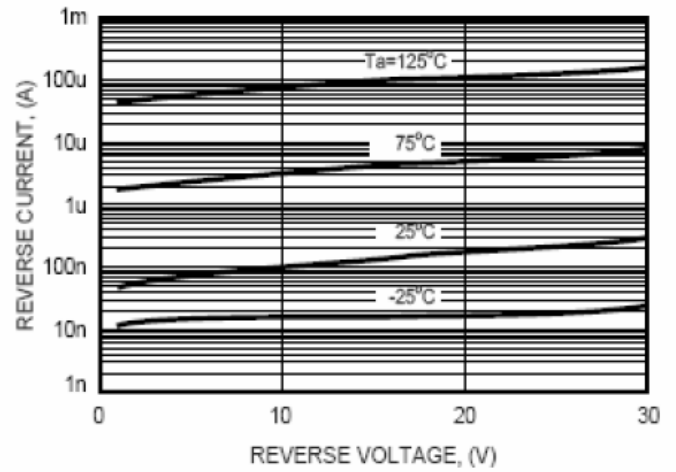
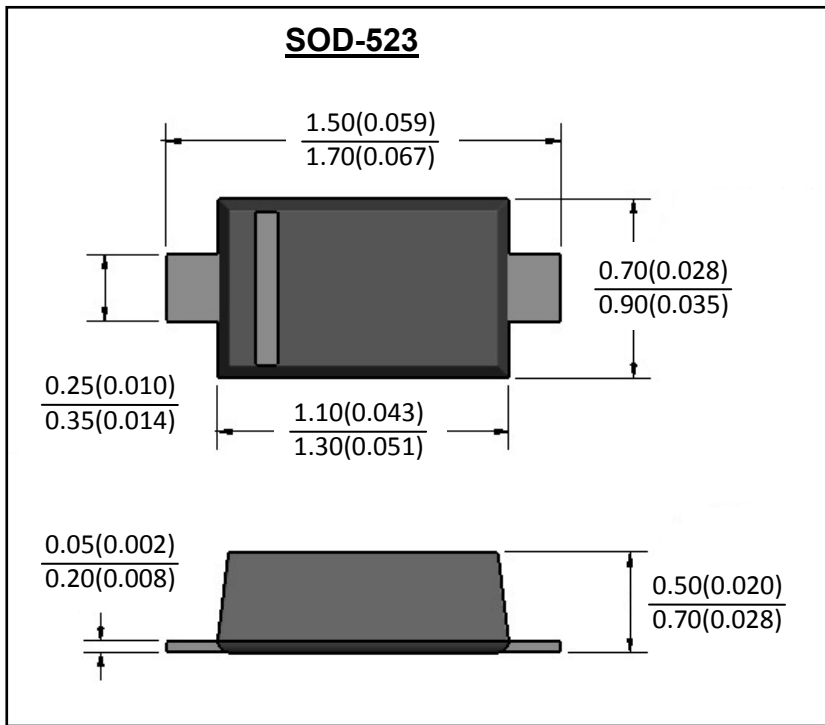


FIG. 2 - REVERSE CHARACTERISTICS



## ■ Outline Dimensions



## ■ Soldering Footprint

