

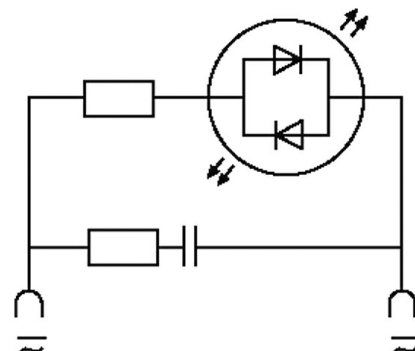
**VALVE PLUG SUPPRESSOR FORM A - 18MM**

RC and LED, 230VAC/DC/10VA/W

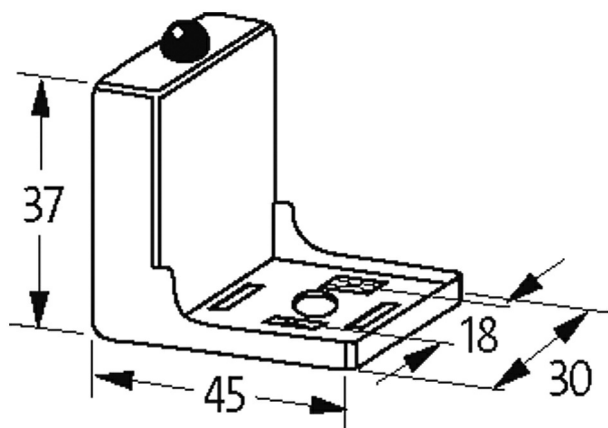
230 V AC/DC

RC + LED

Remove plug gasket when fitting adapter. Other LED colors on request.

[Link to Product](#)**Illustration**

LED + RC



Product may differ from Image

**Technical Data**

Switch off peak	max. 300 V
LED display	(yellow opac)
Input voltage	110...250 V AC/DC
max. power (W)	max. 10 W (VA)
Switch off delay time	max. 20 ms

**General data**

Material (contact)	Silvered bronze
Temperature range	-20...+60 °C
Housing	Polyamide black, flame retardant, temperature resistance up to 130 °C
Dimensions H×W×D	37×45×30 mm

**Commercial data**

country of origin	CZ
-------------------	----

The information in this brochure has been compiled with the utmost care.  
Liability for the correctness completeness and topicality of the information is restricted to gross negligence. Version: 03/22

Murrelektronik Ltd. | 5 Albion Street, Pendlebury Industrial Estate, Swinton | Manchester M27 4FG | Fon +44 161 728 3133 | Fax +44 161 728 3130 | shop@murrelektronik.co.uk | shop.murrelektronik.co.uk

customs tariff number	85363010
EAN	4048879012188
eClass	27371013
Packaging unit	1.000