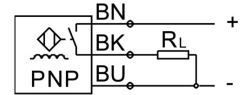
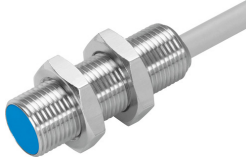


# Proximity sensor SIEH-M12B-PS-K-L

Part number: 150450

**FESTO**



## Data sheet

Feature	Value
Type code	SIEH
Conforms to standard	EN 60947-5-2
Symbol	00991702
Certification	C-Tick c UL us - Listed (OL)
CE marking (see declaration of conformity)	As per EU EMC directive
Note on materials	Free of copper and PTFE
Rated operating distance	4 mm
Assured operating distance	3.24 mm
Reduction factors	Aluminum = 0.4 Stainless steel St 18/8 = 0.8 Copper = 0.4 Brass = 0.5 Steel St 37 = 1.0
Ambient temperature	-25 °C ... 70 °C
Repetition accuracy under constant conditions	0.2 mm
Switching output	PNP
Switching element function	N/O contact
Hysteresis	≤0.36 mm
Max. switching frequency	2500 Hz
Max. output current	200 mA
Voltage drop	≤2 V
Inductive protective circuit	Installed
Short-circuit protection	Pulsed
DC operating voltage range	10 V ... 30 V
Residual ripple	± 10%
Idle current	≤10 mA
Reverse polarity protection	for all electrical connections
Electrical connection	Cable
Cable length	2.5 m
Material of cable sheath	TPE-U(PUR)
Size	M12
Type of mounting	With lock nut
Mounting type	Flush
Product weight	110 g
Housing material	Brass PBTP Nickel-plated

Feature	Value
Switching status indication	LED yellow
Ambient temperature with flexible cable installation	-5 °C ... 70 °C
Degree of protection	IP65 IP67
Corrosion resistance class (CRC)	2 - Moderate corrosion stress
Selection of additional sensor information	With increased switching distance
Electrical output	PNP
Selection of sensor version	Standard