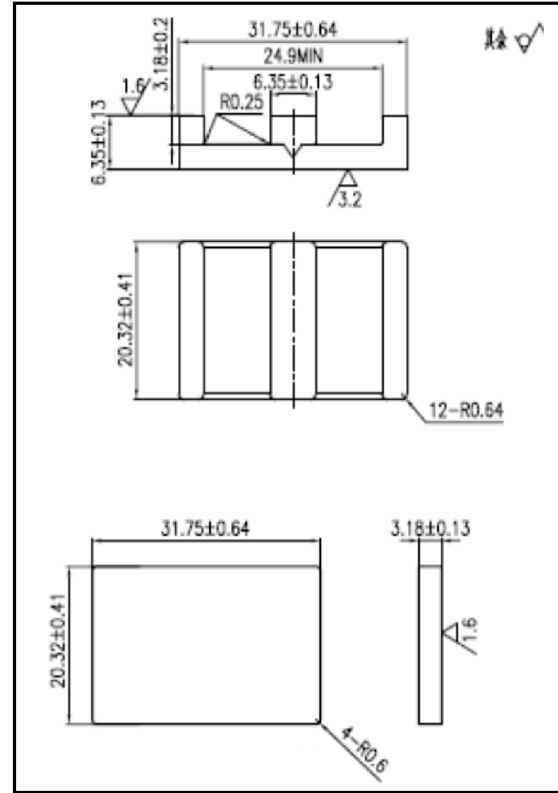
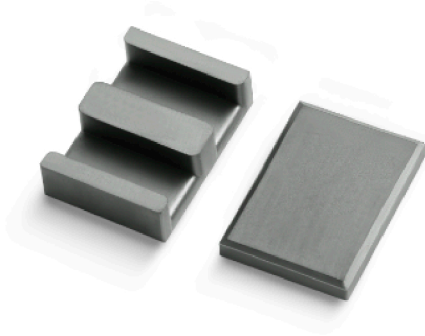


ELP32 + IELP32

CORE SETS

Effective core parameters

SYMBOL	PARAMETER	VALUE	UNIT
$\Sigma (1/A)$	core factor (C_1)	0.30	mm^{-1}
V_e	effective volume	4541.82	mm^3
l_e	effective length	35.40	mm
A_e	effective area	128.30	mm^2
A_{\min}	minimum area	125.48	mm^2
W_t	mass of core set	≈ 24.0	g



Characteristic

GRADE	AL (nH/N ²)	B (mT)	CORE LOSS (W)
	f=10kHz U=0.25V	H=250A/m f=25kHz T=100°C	f=100kHz B=200mT T=100°C
DMR40	6300 ± 25%	≥ 315	≤ 2.88
DMR44	6300 ± 25%	≥ 315	≤ 2.64
DMR47	6600 ± 25%	≥ 325	≤ 2.28
DMR95	8000 ± 25%	≥ 315	≤ 2.50