



Z4V10H 336-11Z-M20

- Snap action with constant contact pressure up to switching point
- 1 Cable entry M 20 x 1.5
- **only for positioning tasks**
- Design to EN 50041
- Thermoplastic enclosure
- Lever angle adjustable in 10° steps
- Double-insulated
- Good resistance to oil and petroleum spirit
- Wide range of alternative actuators
- Actuator heads can be repositioned by 4 x 90°

Data

Ordering data

Product type description	Z4V10H 336-11Z-M20
Article number (order number)	151157105
eCl@ss number, version 12.0	27-27-06-01
eCl@ss number, version 11.0	27-27-06-01
eCl@ss number, version 9.0	27-27-06-01
ETIM number, version 7.0	EC000030
ETIM number, version 6.0	EC000030

Approvals - Standards

Certificates	cULus CCC
--------------	--------------

General data

Housing construction form	Norm construction design
---------------------------	--------------------------

Actuator type to EN 50041	D
Housing material	Plastic, glass-fibre-reinforced
Material of the rod	Plastic (Polyamid)
Gross weight	165 g

General data - Features

Number of auxiliary contacts	1
Number of safety contacts	1

Safety classification

Standards	BG-GS-ET-15 EN ISO 13849-1 EN IEC 60947-5-1
Mission time	20 Year(s)

Safety classification - Safety outputs

B _{10D} Normally-closed contact (NC)	20,000,000 Operations
-----------------------------------------------	-----------------------

Mechanical data

Actuating element	Rod lever
Mechanical life, minimum	30,000,000 Operations
Actuating speed, maximum	2.5 m/s
Note (Actuating speed)	Actuating speed with actuating angle 30° to switch axis
Note Bounce duration	Bounce duration in accordance with actuating speed
Actuating torque, minimum	0.3 Nm

Mechanical data - Connection technique

Termination	Screw terminals M20 x 1.5
Cable section, minimum	0.75 mm ²
Cable section, maximum	2.5 mm ²

Note

All indications including the conductor ferrules.

Mechanical data - Dimensions

Length x Width x Height	Height of sensor: 111.5 mm (without rod)
Length of sensor	52 mm
Width of sensor	40.5 mm

Ambient conditions

Degree of protection	IP65 IP67
Ambient temperature	-30 ... +80 °C

Ambient conditions - Insulation values

Rated insulation voltage U_i	500 V
Rated impulse withstand voltage U_{imp}	6 kV

Electrical data

Thermal test current	10 A
Required rated short-circuit current	1,000 A
Utilisation category AC-15	230 VAC
Utilisation category AC-15	4 A
Utilisation category DC-13	24 VDC
Utilisation category DC-13	4 A
Switching element	NO contact, NC contact
Switching principle	Snap action
Maximum switching frequency	5,000 /h
Switchover time, maximum	2 ms
Material of the contacts, electrical	Silver

Ordering code

Product type description:

(1)(2) 336-(3)(4)-(5)-(6)-(7)-(8)-(9)

(1)	
Z	Snap action
T	Slow action (not for AF/S)
(2)	
S	Plunger S
R	Roller plunger R
H	Roller lever H
10H	Rod lever 10H
7H	Roller lever 7H
1K	Offset roller lever 1K
3K	Angle roller lever 3K
RMS	Brass roller
(3)	
11	1 NO contacts/1 NC contact
02	2 NC contact
20	2 NO contacts, (switches with 2 NO contacts are not suitable for safety applications)
01/01	1 NC contact left / 1 NC contact right
(4)	
Y	IP 65
Z	IP 67
(5)	
R	without latching with latching
(6)	
H	Slow action with staggered contacts
UE	Slow action with overlapping contacts

(7)

without	Cable entry M20
NPT	Cable entry NPT 1/2"
ST	M12 connector with A-coding
ST-2310	M12 connector with B-coding

(8)

2138	Roller lever 7H for position switches with safety function
-------------	------------------------------------------------------------

(9)

1637	Gold-plated contacts
-------------	----------------------

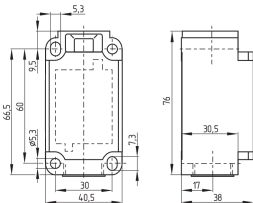
Pictures

Product picture (catalogue individual photo)



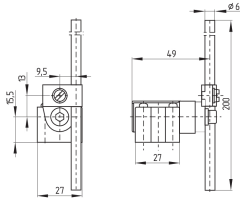
ID: k336hf03
| 830.1 kB | .jpg | 352.778 x 1480.608 mm - 1000 x 4197 px - 72 dpi
| 95.1 kB | .png | 74.083 x 310.797 mm - 210 x 881 px - 72 dpi
| 12.2 kB | .jpg | 29.281 x 123.472 mm - 83 x 350 px - 72 dpi

Dimensional drawing basic component



ID: 1-336g01
| 51.4 kB | .cdr |
| 4.1 kB | .png | 74.083 x 51.506 mm - 210 x 146 px - 72 dpi
| 107.0 kB | .jpg | 352.778 x 245.181 mm - 1000 x 695 px - 72 dpi

Dimensional drawing actuator



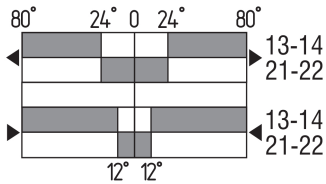
ID: 1h336g03

| 72.8 kB | .cdr |

| 3.8 kB | .png | 74.083 x 52.211 mm - 210 x 148 px - 72 dpi

| 84.2 kB | .jpg | 352.778 x 248.003 mm - 1000 x 703 px - 72 dpi

Switch travel diagram



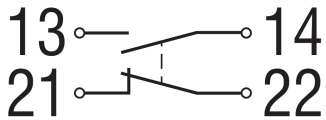
ID: kh335s17

| 25.7 kB | .cdr |

| 2.4 kB | .png | 74.083 x 40.569 mm - 210 x 115 px - 72 dpi

| 85.9 kB | .jpg | 352.778 x 193.322 mm - 1000 x 548 px - 72 dpi

Diagram



ID: k1o1sk01

| 52.2 kB | .jpg | 352.778 x 143.581 mm - 1000 x 407 px - 72 dpi

| 2.6 kB | .png | 74.083 x 29.986 mm - 210 x 85 px - 72 dpi

K.A. Schmersal GmbH & Co. KG, Möddinghofe 30, 42279 Wuppertal

The details and data referred to have been carefully checked. Images may diverge from original. Further technical data can be found in the manual. Technical amendments and errors possible.

Generated on: 26/06/2024, 06:53