

PROPRIETARY NOTE

THIS SPECIFICATION IS THE PROPERTY OF BOE HF AND SHALL NOT BE REPRODUCED OR COPIED WITHOUT THE WRITTEN PERMISSION OF BOE HF AND MUST BE RETURNED TO BOE HF UPON ITS REQUEST



SPEC. NUMBER	PRODUCT GROUP	REV.	ISSUE DATE	PAGE
S8-65-6A-751	TFT- LCD	P0	2023.01.11	1 OF 28

PV121X0M-N10-3850 Product Specification Rev.P0

SUPPLIER	HEFEI BOE Optoelectronics Technology CO., LTD
FG-Code	PV121X0M-N10-3850

ITEM	SUPPLIER	SIGNATURE	DATE
Prepared	_____	_____	_____
Reviewed	_____	_____	_____
Approved	_____	_____	_____

Contents

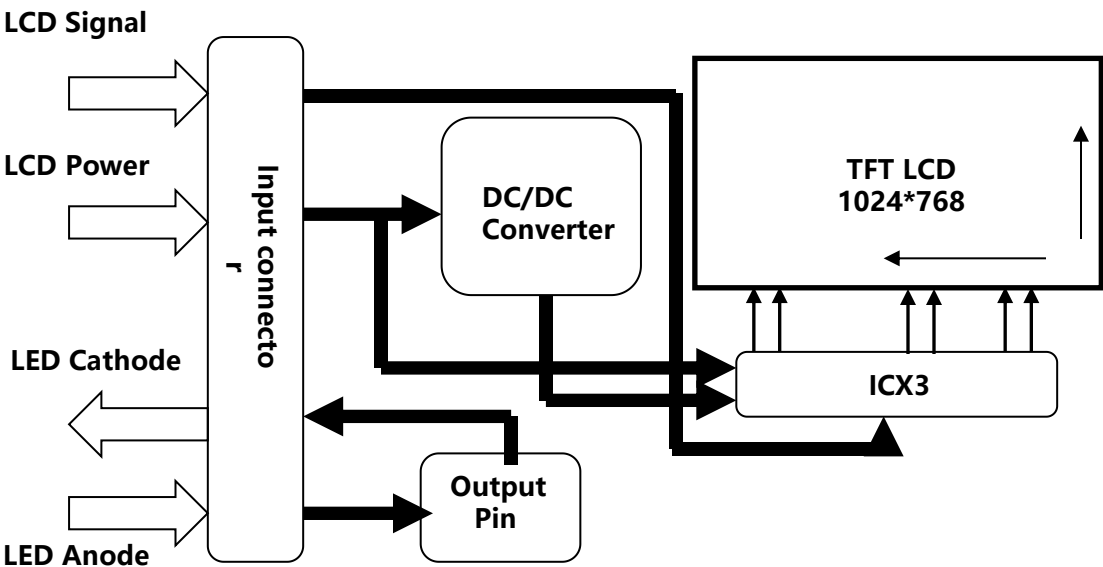
No.	Items	Page
1.0	General Description	4
2.0	Absolute Maximum ratings	6
3.0	Electrical specifications.	7
4.0	Interface Connection	9
5.0	Signal Timing Specifications	12
6.0	DC Specification	13
7.0	Power Sequence	14
8.0	Optical specifications.	15
9.0	Mechanical Outline Dimension	19
10.0	Reliability Test	21
11.0	Precautions	22
12.0	Label	26
13.0	Packing information	28

BOE	PRODUCT GROUP	REV	ISSUE DATE
	TFT LCD PRODUCT	P0	2023.01.11

1.0 GENERAL DESCRIPTION

1.0.1 Introduction

PV121X0M-N10-3850 is a color active matrix TFT LCD module using amorphous silicon TFT's (Thin Film Transistors) as an active switching devices. This module has a 12.1 inch diagonal ly measured active area with XGA resolutions (1024 horizontal by 768 vertical pixel array). Each pixel is divided into RED, GREEN, BLUE dots which are arranged in vertical stripe and this module can display 16.7 M colors.



1.0.2 Features

- LVDS interface
- GOA Design

1.0.3 Application

- Industrial lathe / Colour ultrasonography / Charging pile etc.

SPEC. NUMBER	SPEC TITLE	PAGE
S801-5126	PV121X0M-N10-3850 Product Specification	4 OF 28

BOE	PRODUCT GROUP	REV	ISSUE DATE																																																								
	TFT LCD PRODUCT	P0	2023.01.11																																																								
<div>1.0.4 General Specification(H: horizontal length, V: vertical length)</div> <div>< Table 1. General Specifications ></div> <table><tr><th>Parameter</th><th>Specification</th><th>Unit</th><th>Remarks</th></tr><tr><td>Active area</td><td>245.76 (H) × 184.32(V)</td><td>mm</td><td></td></tr><tr><td>Number of pixels</td><td>1024 (H) × 768 (V)</td><td>Pixels</td><td></td></tr><tr><td>Pixel pitch</td><td>0.08 (H)× 0.24 (V)</td><td>mm</td><td></td></tr><tr><td>MDL Outline</td><td>260.5(W)×204(V)×8.7(D)±0.5</td><td>mm</td><td></td></tr><tr><td>Pixel arrangement</td><td>RGB Vertical stripe</td><td></td><td></td></tr><tr><td>Display colors</td><td>16.7M</td><td>Colors</td><td></td></tr><tr><td>Display mode</td><td>Normally Black</td><td></td><td></td></tr><tr><td>AA-Panel edge(L/R/U/D)</td><td>3.5/3.5/3.5/6.6</td><td>mm</td><td></td></tr><tr><td>Luminance</td><td>Typ. 500 nit; Min 400nit</td><td>nit</td><td></td></tr><tr><td>Color Gamut</td><td>Typ. 72% ; Min 67%</td><td></td><td></td></tr><tr><td>Contrast Ratio</td><td>Typ.1200; Min 900</td><td></td><td></td></tr><tr><td>Response Time</td><td>Typ. 30;Max 35</td><td>ms</td><td></td></tr><tr><td>Viewing Angle(U/D/L/R)</td><td>Typ.: 88/88/88/88</td><td>Deg.</td><td></td></tr></table>				Parameter	Specification	Unit	Remarks	Active area	245.76 (H) × 184.32(V)	mm		Number of pixels	1024 (H) × 768 (V)	Pixels		Pixel pitch	0.08 (H)× 0.24 (V)	mm		MDL Outline	260.5(W)×204(V)×8.7(D)±0.5	mm		Pixel arrangement	RGB Vertical stripe			Display colors	16.7M	Colors		Display mode	Normally Black			AA-Panel edge(L/R/U/D)	3.5/3.5/3.5/6.6	mm		Luminance	Typ. 500 nit; Min 400nit	nit		Color Gamut	Typ. 72% ; Min 67%			Contrast Ratio	Typ.1200; Min 900			Response Time	Typ. 30;Max 35	ms		Viewing Angle(U/D/L/R)	Typ.: 88/88/88/88	Deg.	
Parameter	Specification	Unit	Remarks																																																								
Active area	245.76 (H) × 184.32(V)	mm																																																									
Number of pixels	1024 (H) × 768 (V)	Pixels																																																									
Pixel pitch	0.08 (H)× 0.24 (V)	mm																																																									
MDL Outline	260.5(W)×204(V)×8.7(D)±0.5	mm																																																									
Pixel arrangement	RGB Vertical stripe																																																										
Display colors	16.7M	Colors																																																									
Display mode	Normally Black																																																										
AA-Panel edge(L/R/U/D)	3.5/3.5/3.5/6.6	mm																																																									
Luminance	Typ. 500 nit; Min 400nit	nit																																																									
Color Gamut	Typ. 72% ; Min 67%																																																										
Contrast Ratio	Typ.1200; Min 900																																																										
Response Time	Typ. 30;Max 35	ms																																																									
Viewing Angle(U/D/L/R)	Typ.: 88/88/88/88	Deg.																																																									
SPEC. NUMBER S801-5126	SPEC TITLE PV121X0M-N10-3850 Product Specification		PAGE 5 OF 28																																																								

BOE	PRODUCT GROUP	REV	ISSUE DATE
	TFT LCD PRODUCT	P0	2023.01.11

2.0 ABSOLUTE MAXIMUM RATINGS

The followings are maximum values which, if exceed, may cause faulty operation or damage to the unit. The operational and non-operational maximum voltage and current values are listed in Table 2.

< Table 2. Environment Absolute Maximum Ratings> [Ta =25±2 °C]

Parameter	Symbol	Values			Unit	Notes
		Min.	Typ.	Max.		
LCD Panel Signal Processing Board	VDD	-0.3	-	3.96	V	Ta = 25 °C
Operating Temperature	T _{OP}	-20	-	70	°C	Note2
Storage Temperature	T _{ST}	-30	-	80	°C	
Operating Ambient Humidity	H _{op}	10	-	90	%RH	
Storage Humidity	H _{st}	10	-	90	%RH	
Run time		-	-	168	H	

Note:

- 1.BOE is not responsible for product problems beyond the use conditions.
- 2.When the ambient temperature is T °C, the surface temperature of Panel can not exceed (T+15)°C.

SPEC. NUMBER S801-5126	SPEC TITLE PV121X0M-N10-3850 Product Specification	PAGE 6 OF 28
---------------------------	---	-----------------

BOE	PRODUCT GROUP	REV	ISSUE DATE
	TFT LCD PRODUCT	P0	2023.01.11

3.0 ELECTRICAL SPECIFICATIONS

3.0.1 TFT LCD Module

< Table 3. LCD Module Electrical Specifications > [Ta =25±2 °C]

Parameter	Symbol	Values			Unit	Notes
		Min.	Typ.	Max.		
LCD Panel Signal Processing Board	VDD	3.0	3.3	3.6	V	Note1
LCD Panel Signal Current	I _{DD}	220	235	500	mA	
In-Rush Current	I _{RUSH}	-	-	3	A	
LCD Panel Display Power	P	0.72	0.78	1.65	W	Note1

Note :

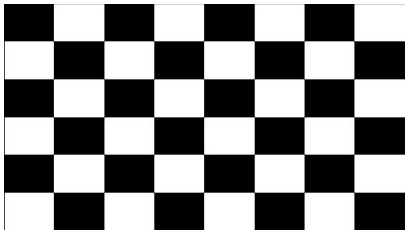
1. The supply voltage is measured and specified at the interface connector of LCM.The current draw and power consumption specified is for VDD=3.3V, Frame rate=60Hz Clock frequency =64.99MHz. Test Pattern of power supply current

a)Typ : Mosaic 8 x 6 Pattern(L0/L255)

b)Max : Skip-Subpixel-255

a) Typ : Mosaic 8 x 6 Pattern(L0/L255)

b) Skip-Subpixel-255



SPEC. NUMBER	SPEC TITLE	PAGE
S801-5126	PV121X0M-N10-3850 Product Specification	7 OF 28

BOE	PRODUCT GROUP	REV	ISSUE DATE
	TFT LCD PRODUCT	P0	2023.01.11

3.0.2 Back-light Unit

< Table 4. LED Driving guideline specifications > Ta=25+/-2°C

Parameter		Symbol	Values			Unit	Notes
			Min.	Typ.	Max.		
Backlight Input Voltage		VLED	11	12	20	V	
Backlight Input Current		I _{LED}	-	480	-	mA	
Backlight Power		PLED	-	9.6	-	W	Note 1
BLU on/off Level		BLU on	2.0	-	-	V	
		BLU off	0	-	0.8	V	
PWMIN	Level	High Level	2.0	-	-	V	
		Low Level	0	-	0.8	V	
	Frequency	F _{PWM}	200	-	10000	Hz	
	Duty Ratio	D _{PWM}	10	-	100	%	
LED Life Time		TLED	50000	-	-	Hrs	Note 2/3

Notes:

- 1.PLED = VLED ×I_{LED}
- 2.The life time of LED, 50,000Hrs, is determined as the time at which luminance of the LED is 50% compared to that of initial value at the typical LED current on condition of continuous operating at 25 ± 2°C.
- 3.Only under the above operating conditions could the life time of LED be guaranteed.

SPEC. NUMBER S801-5126	SPEC TITLE PV121X0M-N10-3850 Product Specification	PAGE 8 OF 28
---------------------------	---	-----------------

BOE	PRODUCT GROUP	REV	ISSUE DATE
	TFT LCD PRODUCT	P0	2023.01.11

4.0 INTERFACE CONNECTION.

4.0.1 Electrical Interface Connection

The electronics interface connector is 9006F20-0048RQ-G4.
The LED connector is 91208-01001-H01(ACES)
The connector interface pin assignments are listed in Table 5 and 6.

<Table 5. Pin Assignments for the Interface Connector>

Terminal	Symbol	Functions
Pin No.	Symbol	Description
1	RX3+	Differential Data Input,CH3(Positive)
2	RX3-	Differential Data Input,CH3(Negative)
3	NC	Non connection
4	NC	Non connection
5	GND	Ground
6	RXC+	Differential Clock Input(Positive)
7	RXC-	Differential Clock Input(Negative)
8	GND	Ground
9	RX2+	Differential Data Input,CH2(Positive)
10	RX2-	Differential Data Input,CH2(Negative)
11	GND	Ground
12	RX1+	Differential Data Input,CH1(Positive)
13	RX1-	Differential Data Input,CH1(Negative)
14	GND	Ground
15	RX0+	Differential Data Input,CH0(Positive)
16	RX0-	Differential Data Input,CH0(Negative)
17	NC	SDA for BOE use, this pin should be open
18	NC	SCL for BOE use, this pin should be open
19	VCC	3.3V Power supply
20	VCC	3.3V Power supply

SPEC. NUMBER	SPEC TITLE	PAGE
S801-5126	PV121X0M-N10-3850 Product Specification	9 OF 28

BOE	PRODUCT GROUP	REV	ISSUE DATE
	TFT LCD PRODUCT	P0	2023.01.11

<Table 6. Pin Assignments for the LED Connector>

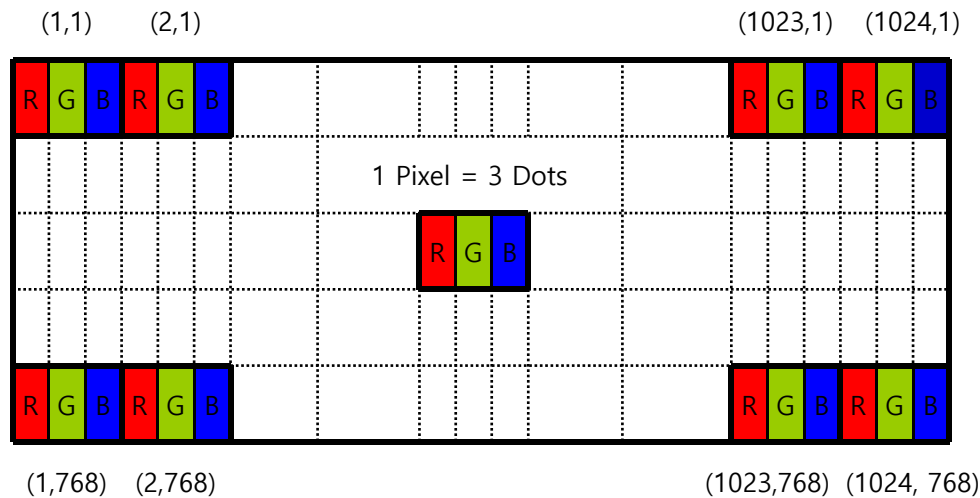
Terminal	Symbol	Functions
Pin No.	Symbol	Description
1	VI	12V
2	VI	12V
3	VI	12V
4	VI	12V
5	GND	Ground
6	GND	Ground
7	GND	Ground
8	GND	Ground
9	EN	Enable
10	PWM	Backlight Adjust, PWM Dimming

SPEC. NUMBER S801-5126	SPEC TITLE PV121X0M-N10-3850 Product Specification	PAGE 10 OF 28
----------------------------------	---	------------------

BOE	PRODUCT GROUP	REV	ISSUE DATE
	TFT LCD PRODUCT	P0	2023.01.11

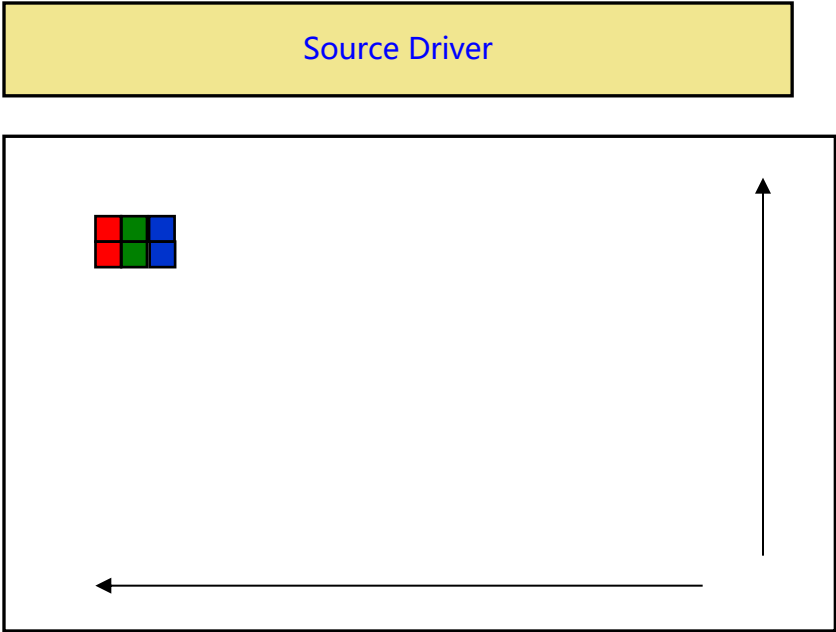
4.0.2 Data Input Format

Figure 1. Pixel Format



Display Position of Input Data (V-H)

Figure 2. Scan direction



SPEC. NUMBER	SPEC TITLE	PAGE
S801-5126	PV121X0M-N10-3850 Product Specification	11 OF 28

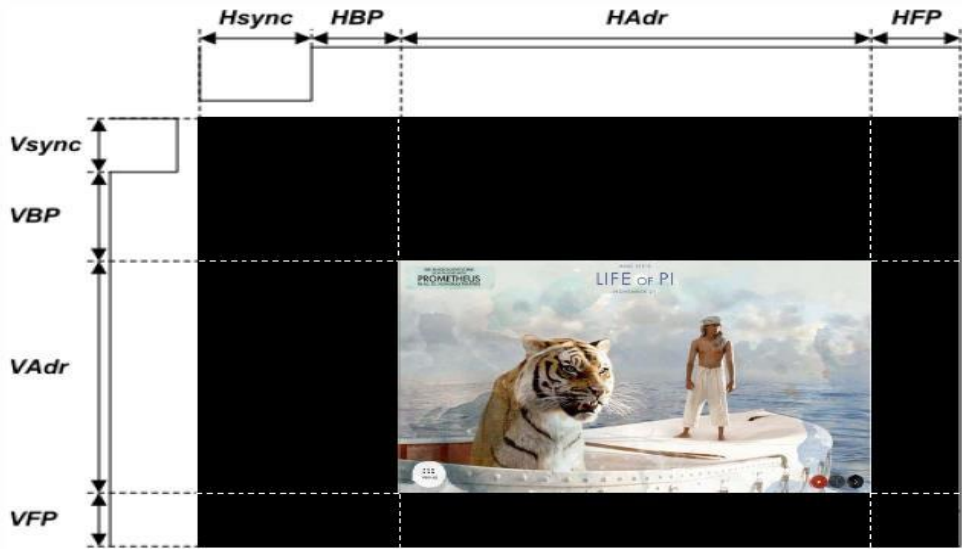
BOE	PRODUCT GROUP	REV	ISSUE DATE
	TFT LCD PRODUCT	P0	2023.01.11

5.0 SIGNAL TIMING SPECIFICATION

5.0.1 The PV121X0M-N10-3850 is operated by the DE only.

<Table 7. SIGNAL TIMING Specification>

Item			Symbol	min	typ	max	UNIT
LCD	Frame Rate		-	55	60	65	Hz
	Pixels Rate		-	59.6	64.9	70.4	MHz
Timing	Horizontal	Horizontal total time	tHP	1284	1344	1404	t _{CLK}
		Horizontal Active time	tHadr	1024			t _{CLK}
		Horizontal Back Porch	tHBP	110	130	150	t _{CLK}
		Horizontal Front Porch	tHFP	110	130	150	t _{CLK}
		Horizontal Pulse Width	tHsync	40	60	80	tCLK
	Vertical	Vertical total time	tvp	798	806	844	tH
		Vertical Active time	tVadr	768			tH
		Vertical Back Porch	tVBP	20	23	40	tH
		Vertical Front Porch	tVFP	8	11	28	tH
		Vertical Pulse Width	tVsync	2	4	8	tH
Lane				-	4	-	Lane



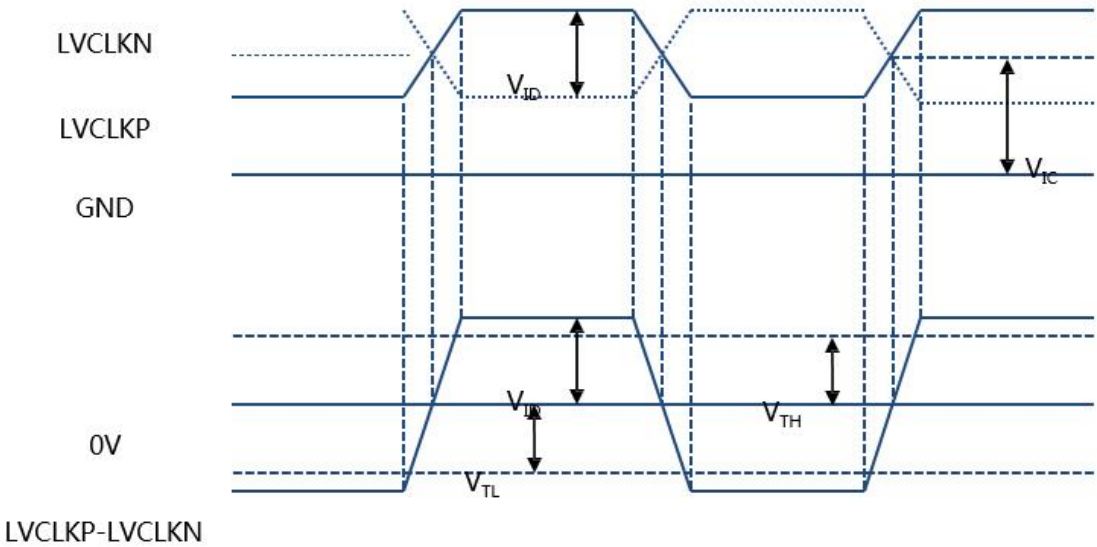
SPEC. NUMBER S801-5126	SPEC TITLE PV121X0M-N10-3850 Product Specification	PAGE 12 OF 28
----------------------------------	---	------------------

BOE	PRODUCT GROUP	REV	ISSUE DATE
	TFT LCD PRODUCT	P0	2023.01.11

6.0 DC Specification

<Table 8. DC Specification>

Parameter	Symbol	Min	Typ	Max	Unit	Condition
Supply current	I _{DD}	-	100	-	mA	
LVDS DC specifications						
Differential input high threshold	V _{TH}	-	-	+100	mV	V _{IC} =1.2V
Differential input low threshold	V _{TL}	-100	-	-	mV	
LVDS common mode voltage	V _{IC}	0.7	-	1.6	V	
LVDS swing voltage	V _{ID}	±100	-	±600	mV	
Mini-LVDS DC specifications						
Output differential voltage range	V _{OD}	±170	±200	±230	mV	PI=14KΩ RL=100Ω (T _A =25°C)
Output differential voltage deviation		410	-	590	mV	
Output offset voltage range	V _{OS}	1.0	1.2	1.4	V	



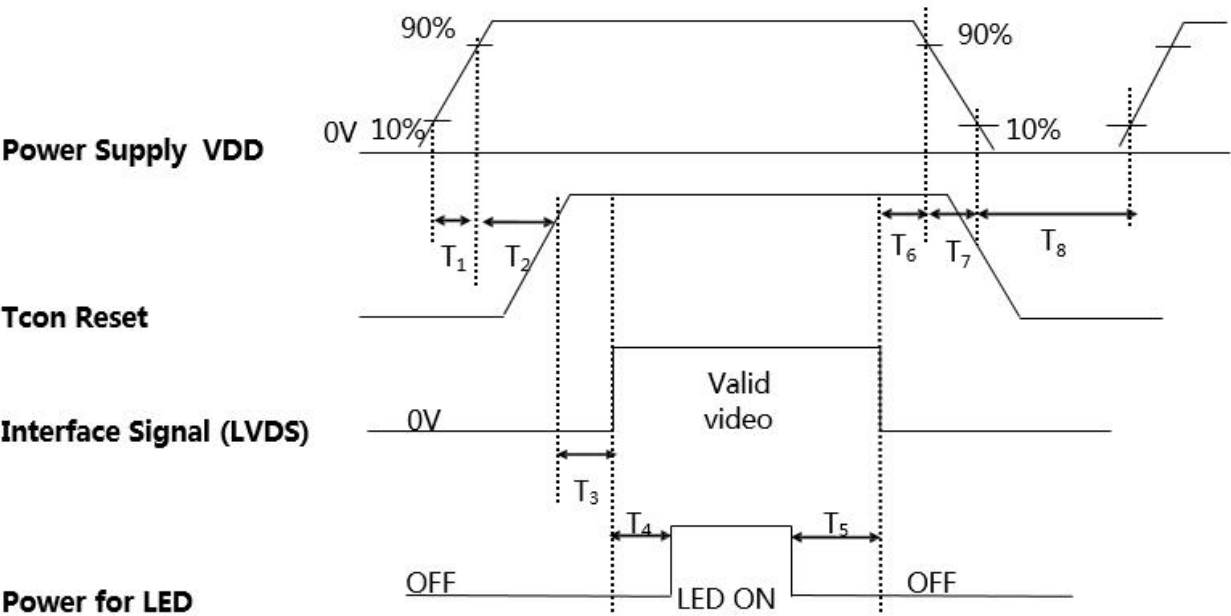
< LVDS V_{ID} and V_{IC} definition >

SPEC. NUMBER	SPEC TITLE	PAGE
801-5126	PV121X0M-N10-3850 Product Specification	13 OF 28

BOE	PRODUCT GROUP	REV	ISSUE DATE
	TFT LCD PRODUCT	P0	2023.01.11

7.0 POWER SEQUENCE

To prevent a latch-up or DC operation of the LCD module, the power on/off sequence shall be as shown in below



Parameter	Value			Units
	Min.	Typ.	Max.	
T1	0.1	-	8	(ms)
T2	-	8	-	(ms)
T3	0	-	-	(ms)
T4	300	-	-	(ms)
T5	300	-	-	(ms)
T6	0	-	50	(ms)
T7	0	-	10	(ms)
T8	500	-	-	(ms)

SPEC. NUMBER	SPEC TITLE	PAGE
S801-5126	PV121X0M-N10-3850 Product Specification	14 OF 28

BOE	PRODUCT GROUP	REV	ISSUE DATE
	TFT LCD PRODUCT	P0	2023.01.11

8.0 OPTICAL SPECIFICATION

8.0.1 Overview

The test of view angle range shall be measured in a dark room (ambient luminance $\leq 1\text{lux}$ and temperature = $25\pm 2^{\circ}\text{C}$) with the equipment of Luminance meter system (Goniometer system and TOPCON CS2000/CA310) and test unit shall be located at an approximate distance 50cm from the LCD surface at a viewing angle of θ and Φ equal to 0° . We refer to $\theta\Phi=0$ ($=\theta_3$) as the 3 o'clock direction (the “right”), $\theta\Phi=90$ ($=\theta_{12}$) as the 12 o'clock direction (“upward”), $\theta\Phi=180$ ($=\theta_9$) as the 9 o'clock direction (“left”) and $\theta\Phi=270$ ($=\theta_6$) as the 6 o'clock direction (“bottom”). While scanning θ and/or Φ , the center of the measuring spot on the Display surface shall stay fixed. The luminance, color and uniformity (etc) should be tested by CS2000/CA310. The backlight should be operating for 10 minutes prior to measurement. VDD shall be $3.3 \pm 0.3\text{V}$ at 25°C . Optimum viewing angle direction is 6 'clock

<Table 9. Optical Specifications>

Parameter		Symbol	Condition	Min.	Typ.	Max.	Unit	Remark
Viewing Angle range	Horizontal	Θ_3	CR > 10	80	88	-	Deg.	Note 1
		Θ_9		80	88	-	Deg.	
	Vertical	Θ_{12}		80	88	-	Deg.	
		Θ_6		80	88	-	Deg.	
Luminance Contrast ratio		CR	$\Theta = 0^\circ$	900	1200	-		Note 2
Luminance of White	Center	Y_w	$\Theta = 0^\circ$	400	500	-	cd/m ²	Note 3
White Luminance uniformity	9 Points	$\Delta Y9$		75	80	-	%	Note 4
Color Gamut	NTSC	CIE1931	$\Theta = 0^\circ$	67	72	-	%	Note 5
Reproduction of color	White	W_x	$\Theta = 0^\circ$	Typ -0.05	0.313	Typ +0.05		
		W_y			0.329			
	Red	R_x			0.652			
		R_y			0.338			
	Green	G_x			0.324			
		G_y			0.607			
	Blue	B_x			0.153			
		B_y			0.048			
Response Time		Tr+Td	Ta= 25° C $\Theta = 0^\circ$	-	30	35	ms	Note 6

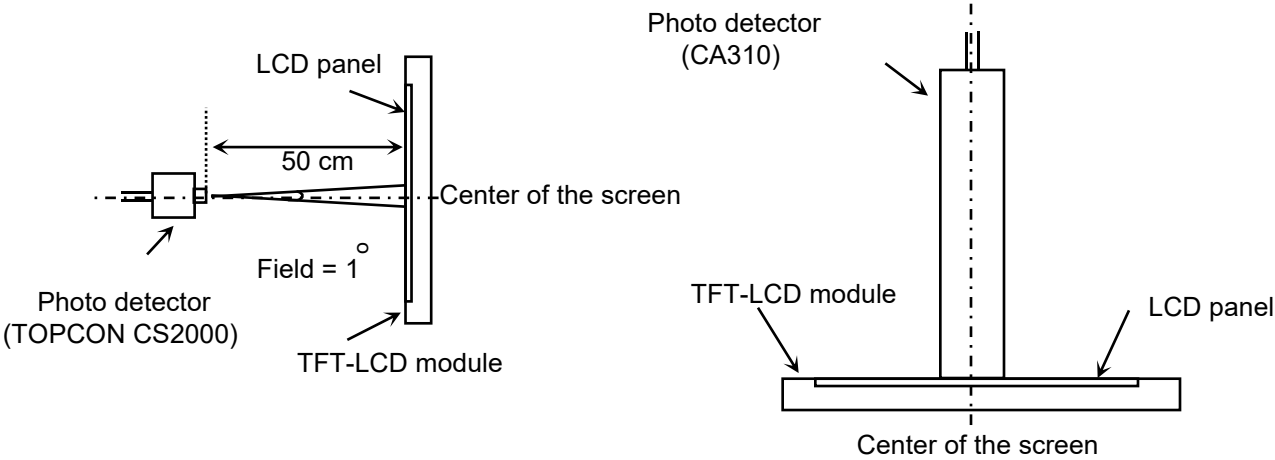
SPEC. NUMBER	SPEC TITLE	PAGE
S801-5126	PV121X0M-N10-3850 Product Specification	15 OF 28

BOE	PRODUCT GROUP	REV	ISSUE DATE
	TFT LCD PRODUCT	P0	2023.01.11
<p>Notes : 1. Viewing angle is the angle at which the contrast ratio is greater than 10. The viewing angles are determined for the horizontal or 3, 9 o'clock direction and the vertical or 6, 12 o'clock direction with respect to the optical axis which is normal to the LCD surface (see FIGURE 3).</p> <p>2. Contrast measurements shall be made at viewing angle of $\Theta = 0$ and at the center of the LCD surface. Luminance shall be measured with all pixels in the view field set first to white, then to the dark (black) state . (see FIGURE 3) Luminance Contrast Ratio (CR) is defined mathematically.</p> $CR = \frac{\text{Luminance when displaying a white raster}}{\text{Luminance when displaying a black raster}}$ <p>3. Luminance of white is defined as luminance values of center of the LCD surface. Luminance shall be measured with all pixels in the view field set first to white. This measurement shall be taken at the locations shown in FIGURE 4 for a total of the measurements per display. The luminance is measured by CS2000/CA310 when the LED current is set at 60mA.</p> <p>4. The White luminance uniformity on LCD surface is then expressed as : $\Delta Y = \frac{\text{Minimum Luminance of 9 points}}{\text{Maximum Luminance of 9 points}}$ (See FIGURE 4).</p> <p>5. The color chromaticity coordinates specified in Table 5. shall be calculated from the spectral data measured with all pixels first in red, green, blue and white. Measurements shall be made at the center of the panel.</p> <p>6. The electro-optical response time measurements shall be made as FIGURE 5 by switching the “data” input signal ON and OFF. The times needed for the luminance to change from 10% to 90% is Tr, and 90% to 10% is Td.</p>			
SPEC. NUMBER S801-5126	SPEC TITLE PV121X0M-N10-3850 Product Specification		PAGE 16 OF 28

BOE	PRODUCT GROUP	REV	ISSUE DATE
	TFT LCD PRODUCT	P0	2023.01.11

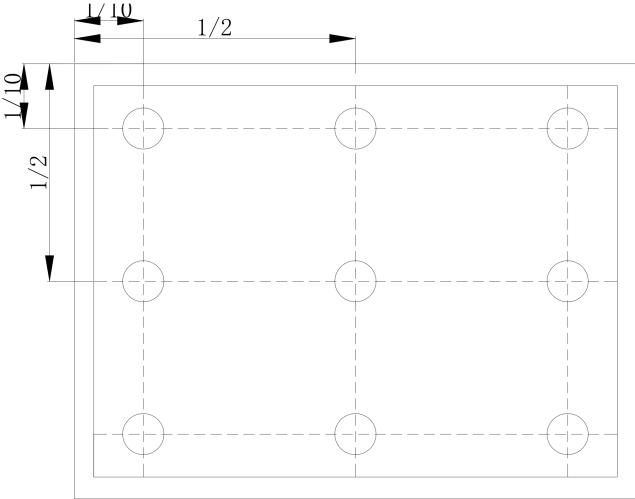
8.0.2 Optical measurements

Figure 3. Measurement Set Up



View angel range, uniformity, etc. measurement setup Flicker, measurement setup

Figure 4. White Luminance and Uniformity Measurement Locations (9 points)



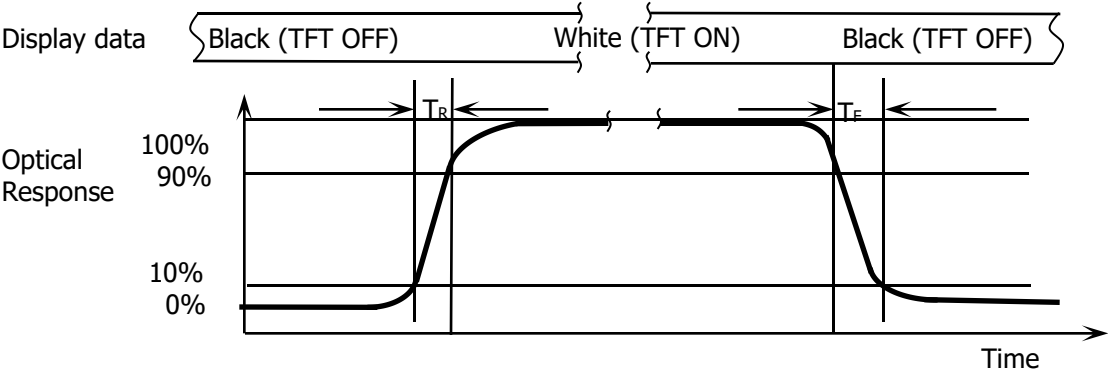
Luminance of white is defined as luminance values of center of the LCD surface. Luminance shall be measured with all pixels in the view field set first to white. This measurement shall be taken at the locations shown in FIGURE 4 for a total of the measurements per display.

The White luminance uniformity on LCD surface is then expressed as : $\Delta Y9 = \text{Minimum Luminance of 9 points} / \text{Maximum Luminance of 9points}$ (see FIGURE4).

SPEC. NUMBER	SPEC TITLE	PAGE
S801-5126	PV121X0M-N10-3850 Product Specification	17 OF 28

BOE	PRODUCT GROUP	REV	ISSUE DATE
	TFT LCD PRODUCT	P0	2023.01.11

Figure 5. Response Time Testing



The electro-optical response time measurements shall be made as shown in FIG URE5 by switching the “data” input signal ON and OFF. The times needed for th e luminance to change from 10% to 90% is T_r and 90% to 10% is T_d .

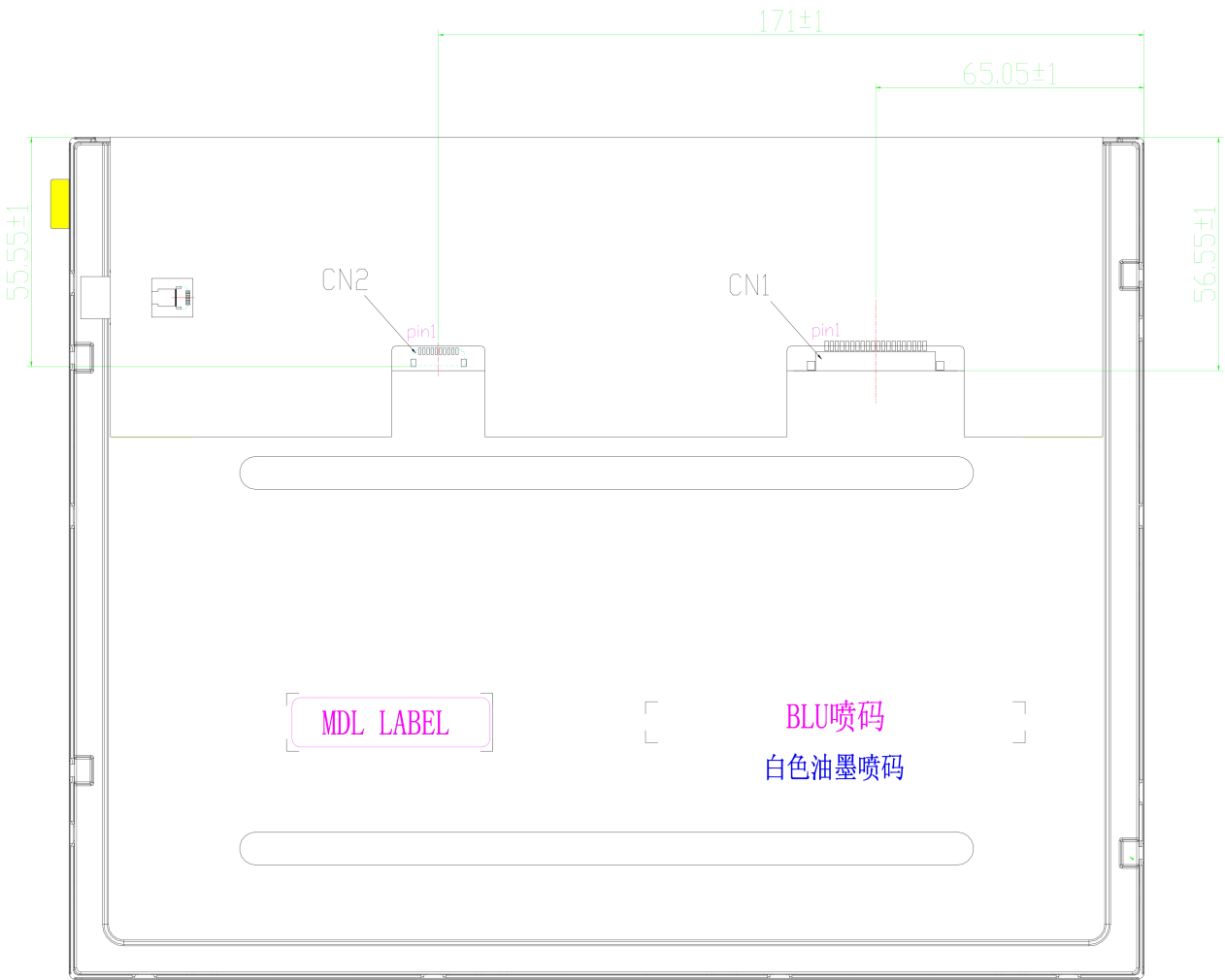
SPEC. NUMBER	SPEC TITLE	PAGE
S801-5126	PV121X0M-N10-3850 Product Specification	18 OF 28

9.0 MECHANICAL OUTLINE DIMENSION

Figure 6. TFT-LCD Module Outline Dimension (Front View)

BOE	PRODUCT GROUP	REV	ISSUE DATE
	TFT LCD PRODUCT	P0	2023.01.11

Figure 7. TFT-LCD Module Outline Dimensions (Rear view)



SPEC. NUMBER S801-5126	SPEC TITLE PV121X0M-N10-3850 Product Specification	PAGE 20 OF 28
----------------------------------	---	------------------

BOE	PRODUCT GROUP	REV	ISSUE DATE
	TFT LCD PRODUCT	P0	2023.01.11

10.0 RELIABILITY TEST

The Reliability test items and its conditions are shown in below.

<Table 10. Reliability test>

No	Test Items	Conditions	Remark
1	High temperature storage test	Ta = 80℃, 240 hrs	
2	Low temperature storage test	Ta = -30 ℃, 240 hrs	
3	High temperature operation test	Ta = 70℃, 240 hrs	
4	Low temperature operation test	Ta = -20 ℃, 240 hrs	
5	High temperature & high humidity operation test	Ta = 60 ℃, 90%RH, 240 hrs	
6	Thermal shock	Ta = -40 ℃ (0.5 hr)↔ 80℃ (0.5 hr), 100 cycle	Non-operation
7	Image Sticking	Burn in:5*5 Chess,1h@25C. Inspection Pattern:50% grey, Perpendicular view, after 3mins,the mura must disappear	
8	ESD test	Air Voltage:±15KV Contact Voltage:±8KV Class B	
9	Vibration Test	1.47G, Random, X/Y per 30min, Z per 60min	

Note : After the reliability test, the product only guarantee function normally without any fatal defect (non-display, line defect, abnormal display etc). All the cosmetic specification is judged before the reliability test.

SPEC. NUMBER S801-5126	SPEC TITLE PV121X0M-N10-3850 Product Specification	PAGE 21 OF 28
---------------------------	---	------------------

BOE	PRODUCT GROUP	REV	ISSUE DATE
	TFT LCD PRODUCT	P0	2023.01.11
<ul style="list-style-type: none"> 11.0 Precautions Please pay attention to the followings when you use this TFT LCD Panel. <ul style="list-style-type: none"> 11.1 Mounting Precautions <ul style="list-style-type: none"> (1) Use fingerstalls with soft gloves in order to keep display clean during the incoming inspection and assembly process. (2) You must mount a module using specified mounting holes (Details refer to the drawings). (3) Please make sure to avoid external forces applied to the Source PCB and D-IC during the process of handling or assembling. If not, It causes panel damage or malfunction. (4) Note that polarizers are very fragile and could be easily damaged. Do not touch, push or rub the exposed polarizers with glass, tweezers or anything harder than HB pencil lead. And please do not rub with dust clothes with chemical treatment. (5) Do not pull or fold the source D-IC which connect the source PCB and the panel. Do not pull or fold the LED wire. (6) After removing the protective film, when the surface becomes dusty, please wipe gently with absorbent cotton or other soft materials like chamois soaks with alcohol or purified water. Do not strong polar solvent because they cause chemical damage to the polarizer. (7) Wipe off saliva or water drops as soon as possible. Their long time contact with polarizer causes deformations and color fading. (8) Protection film for polarizer on the module shall be slowly peeled off just before use so that the electrostatic charge can be minimized. (9) Since the LCD is made of glass, do not apply strong mechanical impact or static load onto it. Handling with care since shock, vibration, and careless handling may seriously affect the product. If it falls from a high place or receives a strong shock, the glass may be broken. (10) Do not disassemble the module. (11) To determine the optimum mounting angle, refer to the viewing angle range in the specification for each model. (12) If the customer's set presses the main parts of the LCD, the LCD may show the abnormal display. But this phenomenon does not mean the malfunction of the LCD and should be pressed by the way of mutual agreement. (13) Do not drop water or any chemicals onto the LCD's surface. 			
SPEC. NUMBER S801-5126	SPEC TITLE PV121X0M-N10-3850 Product Specification	PAGE 22 OF 28	

BOE	PRODUCT GROUP	REV	ISSUE DATE
	TFT LCD PRODUCT	P0	2023.01.11

11.2 Operating Precautions

- (1) Be careful for condensation at sudden temperature change. Condensation makes damage to polarizer or electrical contacted parts. And after fading condensation, smear or spot will occur.
- (2) Module has high frequency circuits. Sufficient suppression to the electromagnetic interference shall be done by system manufacturers. Grounding and shielding methods may be important to minimized the interference.
- (3) The electrochemical reaction caused by DC voltage will lead to LCD degradation, so DC drive should be avoided.
- (4) The LCD modules use C-MOS LSI drivers, so customers are recommended that any unused input terminal would be connected to Vdd or Vss, do not input any signals before power is turn on, and ground you body, work/assembly area, assembly equipments to protect against static electricity.
- (5) Do not exceed the absolute maximum rating value. (supply voltage variation, input voltage variation, variation in part contents and environmental temperature, and so on) Otherwise the Module may be damaged.
- (6) Design the length of cable to connect between the connector for back-light and the converter as short as possible and the shorter cable shall be connected directly.
The longer cable between that of back-light and that of converter may cause the luminance of LED to lower and need a higher startup voltage(Vs).
- (7) Connectors are precise devices for connecting PCB and transmitting electrical signals. Operators should insert and unplug MDL in parallel when assembling MDL.
- (8) Do not connect or disconnect the cable to/ from the module at the "Power On" condition.
- (9) When the module is operating, do not lose CLK, ENAB signals. If any one these signals is lost, the LCD panel would be damaged.
- (10) Obey the supply voltage sequence. If wrong sequence is applied, the module would be damaged.
- (11) Do not re-adjust variable resistor or switch etc.

11.3 Electrostatic Discharge Control

- (1) Since a module is composed of electronic circuits, it is not strong to electrostatic discharge. Make certain that treatment persons are connected to ground through wrist band etc. And don't touch interface pin directly. Keep products as far away from static electricity as possible.
- (2) Avoid the use work clothing made of synthetic fibers. We recommend cotton clothing or other conductivity-treated fibers.

SPEC. NUMBER	SPEC TITLE	PAGE
S801-5126	PV121X0M-N10-3850 Product Specification	23 OF 28

BOE	PRODUCT GROUP	REV	ISSUE DATE
	TFT LCD PRODUCT	P0	2023.01.11

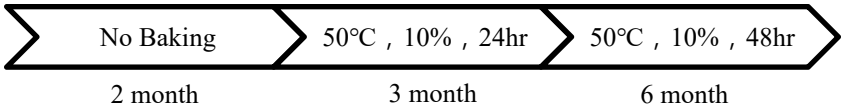
11.4 Precautions for Strong Light Exposure

It is not allowed to store or run directly in strong light or in high temperature and humidity for a long time; Strong light exposure causes degradation of polarizer and color filter.

11.5 Storage Precautions

When storing modules as spares for a long time, the following precautions are necessary.

- (1) The polarizer surface should not come in contact with any other object.
It is recommended that they be stored in the container in which they were shipped.
Temperature : 5 ~ 40 °C
- (2) Humidity : 35 ~ 75 %RH
- (3) Period : 12 months
- (4) Control of ventilation and temperature is necessary.
- (5) Please make sure to protect the product from strong light exposure, water or moisture.
Be careful for condensation.
- (6) Store in a polyethylene bag with sealed so as not to enter fresh air outside in it.
- (7)Do not store the LCD near organic solvents or corrosive gasses.
- (8) Please keep the Modules at a circumstance shown below Fig.



11.6 Precautions for Protection Film (适用通用产品, 含Q/Single Production)

- (1) Remove the protective film slowly, keeping the removing direction approximate 30-degree not vertical from panel surface, If possible, under ESD control device like ion blower, and the humidity of working room should be kept over 50%RH to reduce the risk of static charge.
- (2) In handling the LCD, wear non-charged material gloves. And the conducting wrist to the earth and the conducting shoes to the earth are necessary.

11.7 Appropriate Condition for Display

- (1) Normal operating condition
 - Temperature: 0 ~ 40°C
 - Operating Ambient Humidity : 10 ~ 90 %
 - Display pattern: dynamic pattern (Real display)
 - Suitable operating time: under 16 hours a day. (Please contract BOE in advance for 7*24hrs or more than suggested Operating time)
 - Long-term lighting products recommended regular shutdown
- (2) Special operating condition
If the product will be used in extreme conditions such as high temperature, humidity, display patterns or 7*24hrs operation time etc., It is strongly recommended to contact BOE for Application engineering advice. Otherwise, its reliability and function may not be guaranteed.
- (3)Black image or moving image is strongly recommended as a screen save.

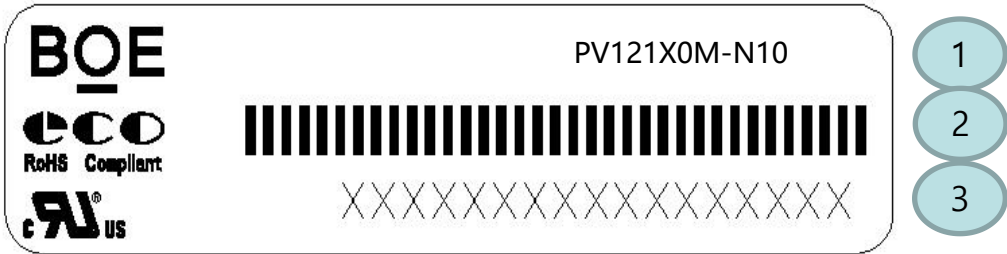
SPEC. NUMBER	SPEC TITLE	PAGE
S801-5126	PV121X0M-N10-3850 Product Specification	24 OF 28

BOE	PRODUCT GROUP	REV	ISSUE DATE
	TFT LCD PRODUCT	P0	2023.01.11
<ul style="list-style-type: none">• (4) Lifetime in this spec. is guaranteed only when commercial display is used according to operating usages.• (5) Please contact BOE in advance for outdoor operation.• (6) Please contact BOE in advance when you display the same pattern for a long time.• (7) If the Module keeps displaying the same pattern for a long period of time, the image may be "sticked" to the screen. To avoid image sticking, it is recommended to use a screen saver.• (8) Do not exceed the absolute maximum rating value. (supply voltage variation, input voltage variation, variation in part contents and environmental temperature, and so on) Otherwise the Module may be damaged.• (9) Dew drop atmosphere should be avoided.• (10) The storage room should be equipped with a good ventilation facility and avoid to expose to corrosive gas , which has a temperature controlling system.• (11) When expose to drastic fluctuation of temperature (hot to cold or cold to hot) ,the LCD may be affected; Specifically, drastic temperature fluctuation from cold to hot ,produces dew on the LCD's surface which may affect the operation of the polarizer and the LCD.• (12) Response time will be extremely delayed at lower temperature than the operating temperature range and on the other hand at higher temperature LCD may turn black at temperature above its operational range. However those phenomena do not mean malfunction or out of order with the LCD. The LCD will revert to normal operation once the temperature returns to the recommended temperature range for normal operation			
11.8 Others			
A. LC Leak			
<ul style="list-style-type: none">• If the liquid crystal material leaks from the panel, it is recommended to wash the LC with acetone or ethanol and then burn it.• In case of contact with hands, skin or clothes, it has to be washed away thoroughly with soap.• If LC in mouth, mouth need to be washed, drink plenty of water to induce vomiting and follow medical advice.• If LC touch eyes, eyes need to be washed with running water at least 15 minutes.			
B. Rework			
<ul style="list-style-type: none">• When returning the module for repair or etc., Please pack the module not to be broken. We recommend to use the original shipping packages.			
SPEC. NUMBER	SPEC TITLE	PAGE	
S801-5126	PV121X0M-N10-3850 Product Specification	25 OF 28	

BOE	PRODUCT GROUP	REV	ISSUE DATE
	TFT LCD PRODUCT	P0	2023.01.11

12.0 LABEL

(1) Product label



- Label Size :48mm*12mm / Thickness: 0.08mm
- Contents
 1. FG-CODE: PV121X0M-N10
 2. MDL ID Barcode
 3. MDL ID

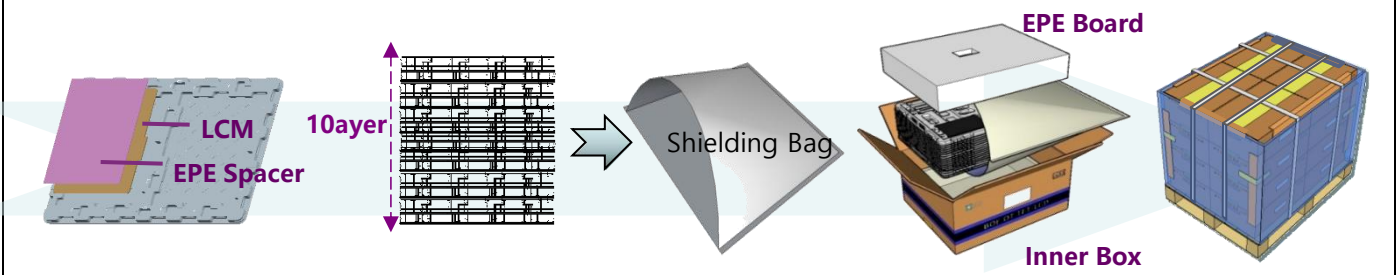
MDL ID Naming Rule:

序列号	1	2	3	4	5	6	7	8	9	10	11	12	13	14	15	16	17
代码	X	X	X	3	X	X	X	3	8	5	0	X	X	X	X	X	X
描述	GBN代码		等级	B3	年份		月	FG Code后四位				序列号					

SPEC. NUMBER S801-5126	SPEC TITLE PV121X0M-N10-3850 Product Specification	PAGE 26 OF 28
---------------------------	---	------------------

<div>BOE</div>	PRODUCT GROUP	REV	ISSUE DATE
	TFT LCD PRODUCT	P0	2023.01.11

13.0 PACKING INFORMATION



- 1-. Put the LCM in the Tray
-. Then put the Spacer on the LCM
-. Capacity:2pcs LCM/Tray
2pcs Spacer/Tray

2-. Repeat put the Tray & Panel & Spacer until to 9pcs,
At last put 1pcs empty Tray

-Put the 10pcs Tray in the Shielding Bag to vacuum
- 3-. Put one EPE Board in the Inner Box
-.Put the Shielding Bag with 10 pcs Tray
in the EPE Board

-.At last put one EPE Board
-. Capacity : 18pcs LCM/Box

4-. Put 16EA Box on the Pallet

-. Secure with strapping tape, wrap around
film, paper protection Angle.

-.Capacity:4EA Box/Layer,4Layer,288pcs LCM/Pallet

Note

- Box dimension: :607mm(W) x 507mm(D) x 240mm(H)
- Package quantity in one box: 18pcs

SPEC. NUMBER	SPEC TITLE	PAGE
S801-5126	PV121X0M-N10-3850 Product Specification	28 OF 28